



MITAC



Moving Data at the Speed of Light!

**MiTAC Industrial Corp.
Network Storage Division**

41968 Christy St., Fremont CA 94538 USA

(510) 656-5288



Mission Statement

The Network Storage Division of MiTAC Industrial Corp. (**MiTAC-NSD**) was founded by a group of engineers and sales in January 2001. They have been engaged in the design, development, manufacturing, and marketing of Network and Storage Solutions for more than 10 years.

- ***Mission Statement:***

- To develop cutting-edge technology and solutions for Network Storage Marketplace.
- To operate in a responsive and ethical manner.
- To create partnerships with its customers.



Overview and Strengths

- **Overview:** Our Team is *Highly Motivated and Dedicated*.
- **Strengths:**
 - System integration - Making sure the *Whole* is greater than the sum of its parts.
 - Services and Support - Keeping customer's SAN systems up and running in a *Professional* manner.
 - Equipment development - Providing innovative *Total* solution.



Benefits of SAN Applications

- **Fault-tolerance-** in a SAN environment, if a server were to fail, access to the data can still be accomplished because other servers will have access to that data through the SAN.
- **Disaster Recovery-** provides a higher data transfer rate than conventional LAN/WAN technology, and over greater distances, allowing backups or recovery to/from remote locations to be done during a relatively short window of time.



Benefits of SAN Applications

- **Network Performance Enhancement-** data traffic does not traditionally travel over the LAN twice, reducing the network traffic in half.
- **Data Transfer Performance-** SANs allow data transfer rates of up to 100 MB/s full duplex and initiatives are underway to further increase this throughput.
- **Cost Effectiveness-** SAN technology allows the total capacity of storage to be allocated where it is needed.



Benefits of SAN Applications

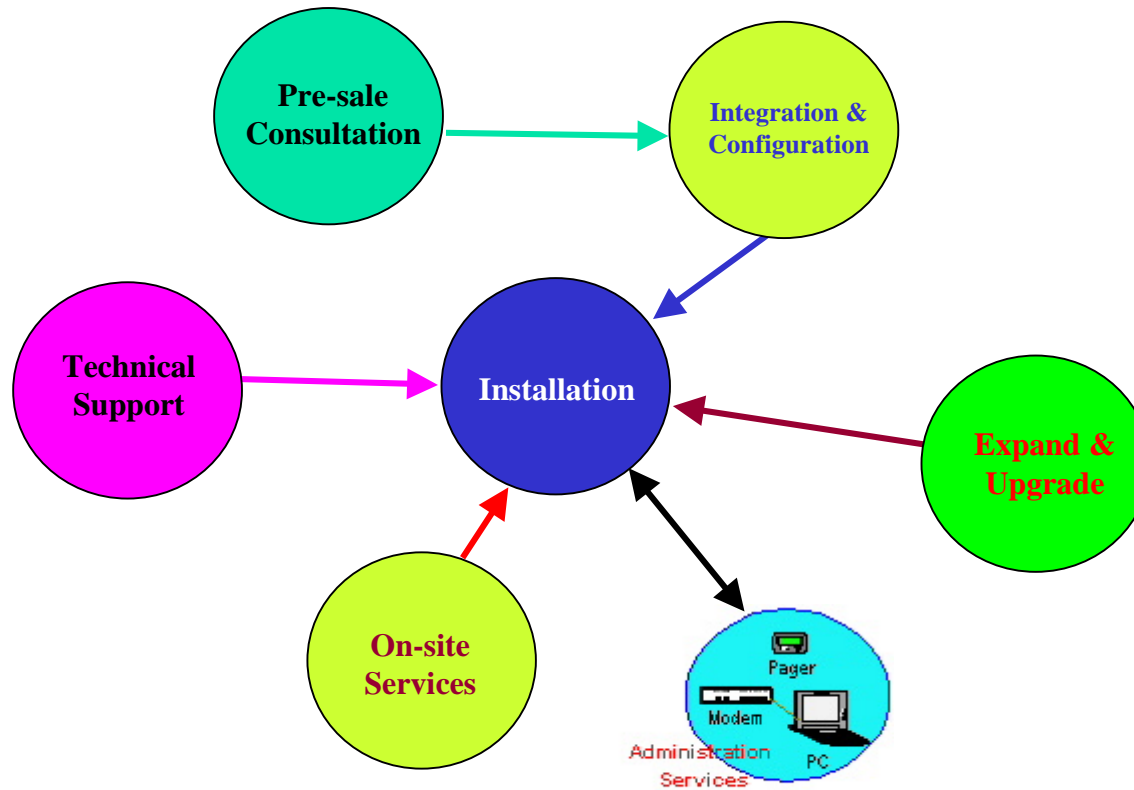
- **Manageability**- Storage Management in a SAN environment allows offloading the responsibility of maintaining the storage devices to dedicated groups.
- **Scalability**- SAN technology breaks the physical distance limitation by allowing you to locate your storage miles away as opposed to only a few feet.
- **Storage Pool**- a storage pool can be accessed via a SAN, which reduces the total extra storage needed for projected growth.



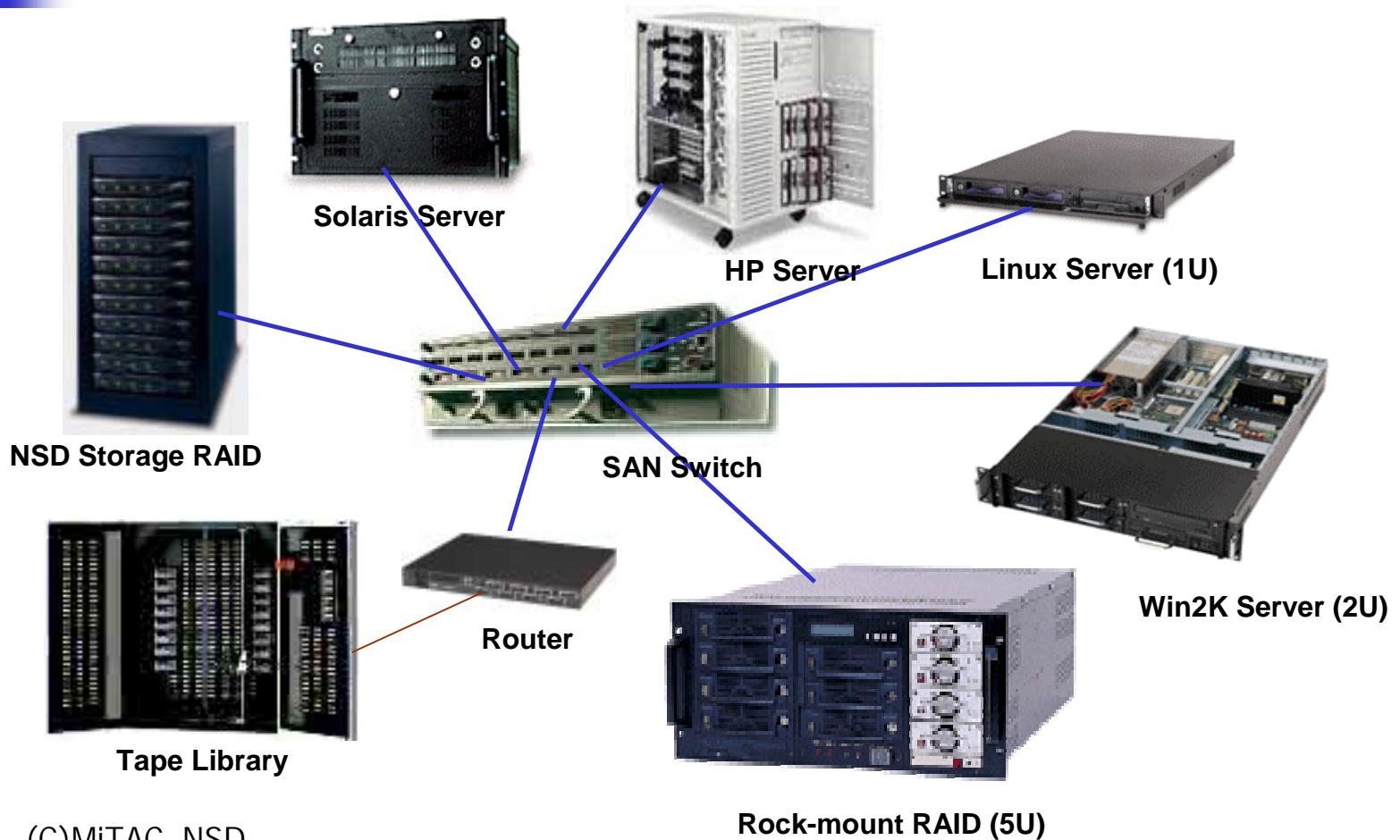
NSD Total Storage Solutions

- 2Gbps Network Storage Solutions.
- High Performance Network Server.
- 2Gbps FC Switch/Router/Cache.
- FC or SCSI RAID and JBOD.
- Network Attached Storage (NAS).
- DynaCrypto™ Console Wizard (Q3-01).
- 1Gbps+ Wireless SAN Bridge (Q4-01).
- DynaCrypto™ VPN Gateway (Q1-02).
- 10Gbps SAN Switch/Router (Q3-02).

MiTAC-NSD Full Services



Fibre Channel SAN Solutions





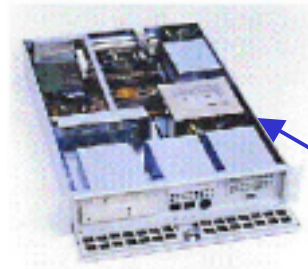
Fibre Channel vs. SCSI

| Item \ Type | SCSI | Fibre Channel | |
|---------------------------|---|----------------|--------------------|
| | | 1 Gbit | 2 Gbit |
| Max# Connections | 16 | 127/16M | 127/16M |
| Maximum Distance | 25 M | 10KM | 10KM ~ 40KM |
| Speed | Ultra 2 LVD 80MB Ultra 160 160MB | 100MB | 200MB |
| Sharing of Devices | No | Yes | Yes |
| High Availability | No | Yes | Yes |



P-to-P SAN Solutions

Point-to-Point SAN Application

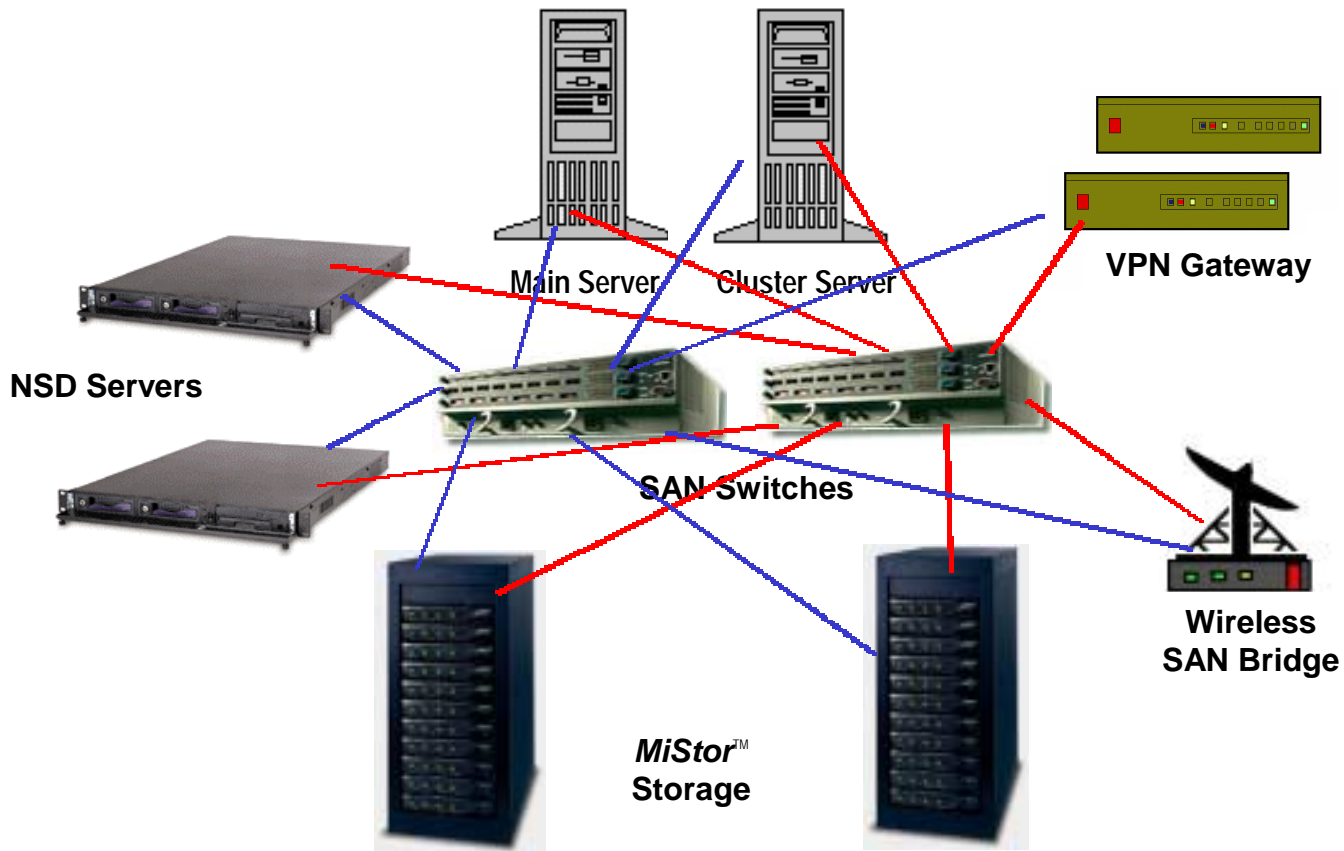


LAN Server



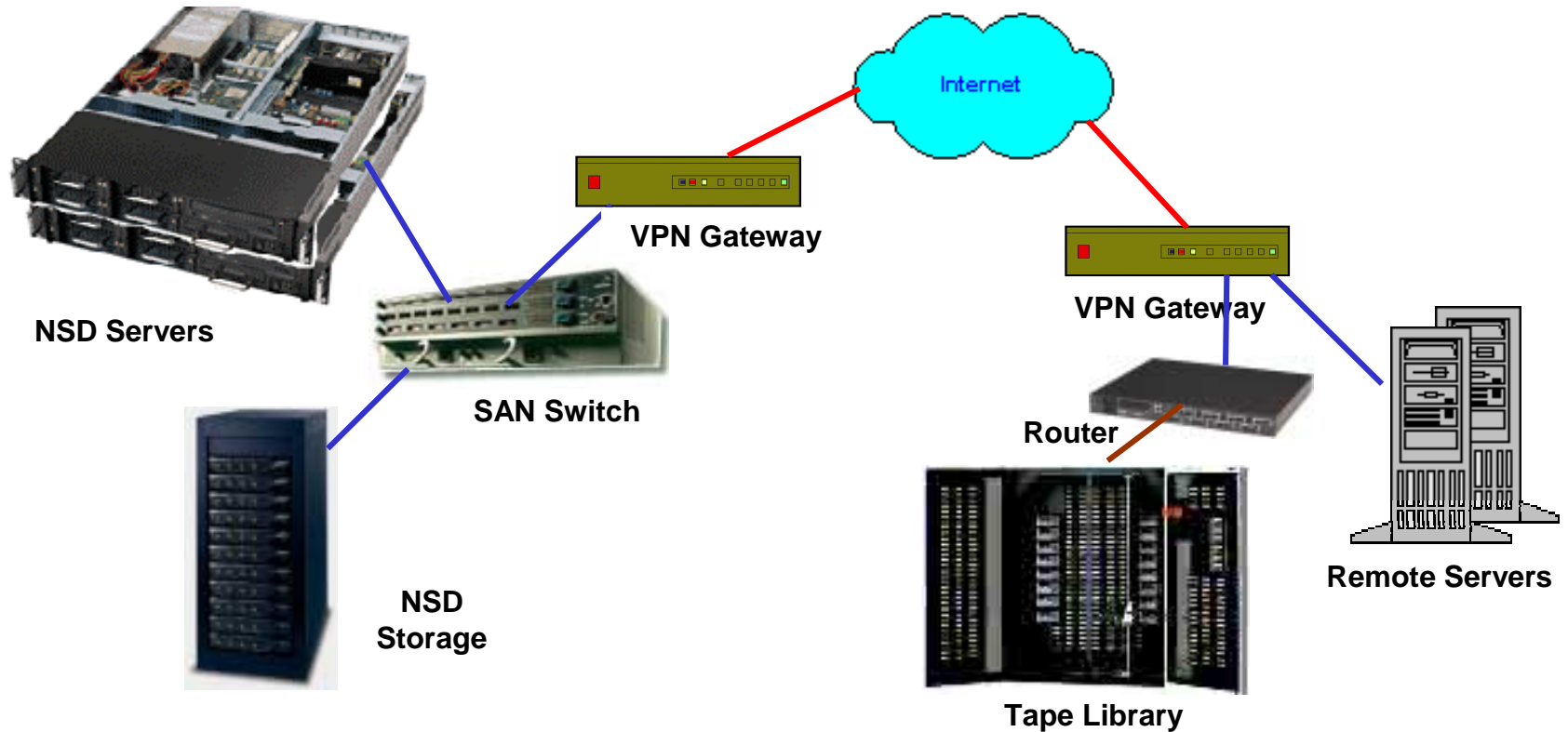
NSD Storage RAID

High Availability Solutions

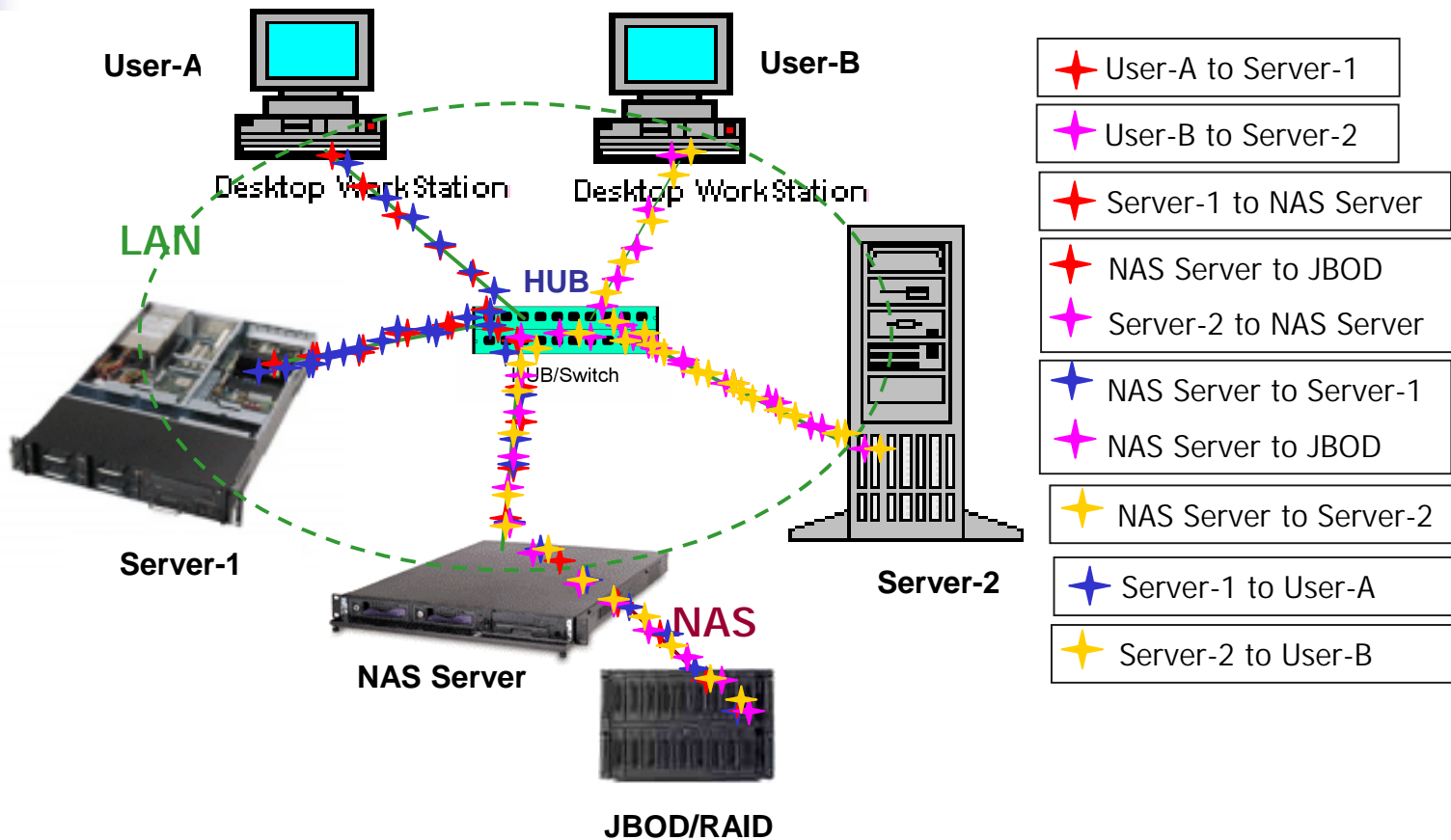


WAN Storage Solutions

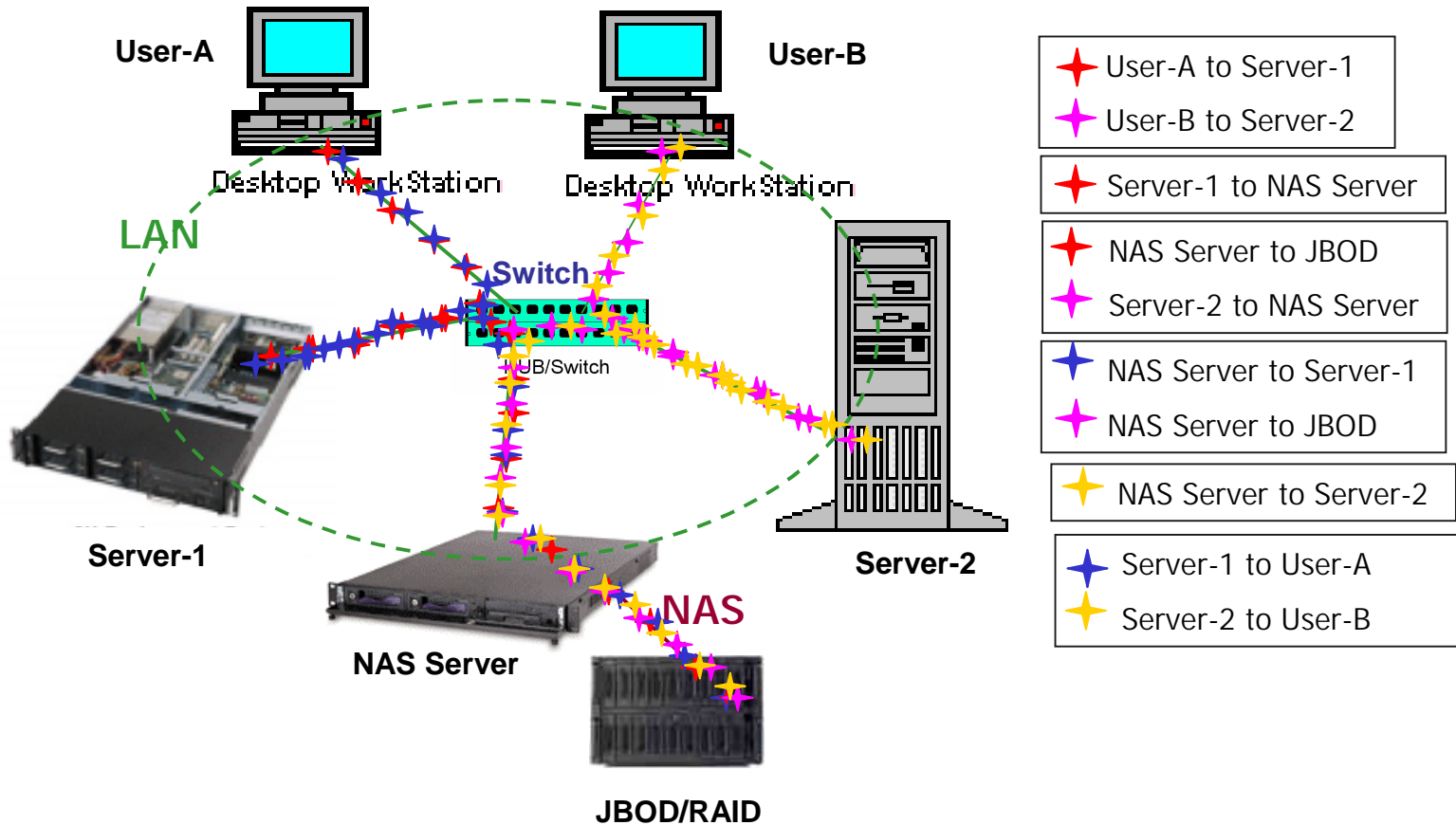
DynaCrypto™ VPN Applications (Q1-02)



Network Attached Storage (NAS) w/ HUB



Network Attached Storage (NAS) w/ Switch





High Performance Servers and RAID



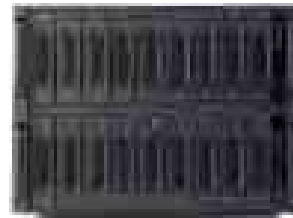
RM1 Server



RM2 Server



RM4 Server



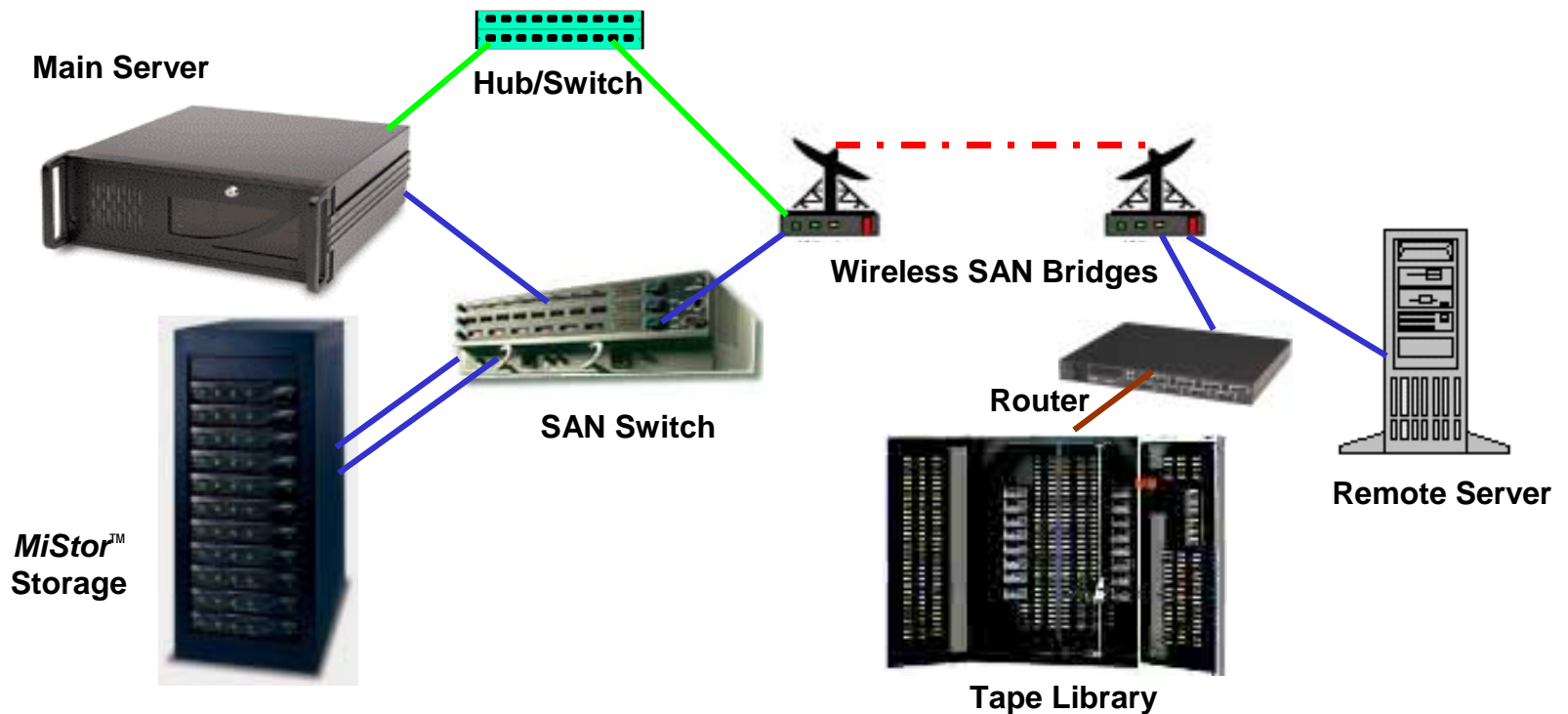
JBOD/RAID



**NSD Storage
RAID**

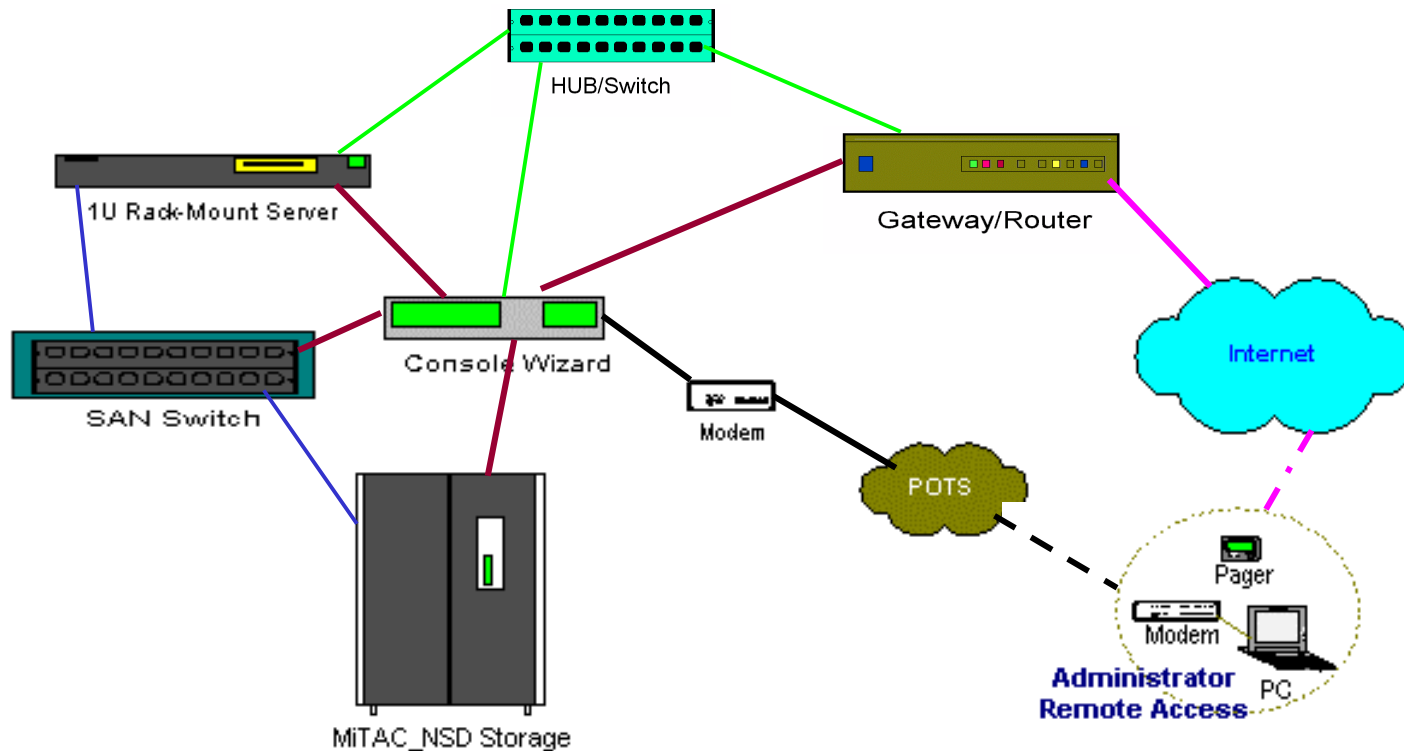
1Gbps+ Wireless SAN Bridge

Campus Network Storage Applications (Q4-01)

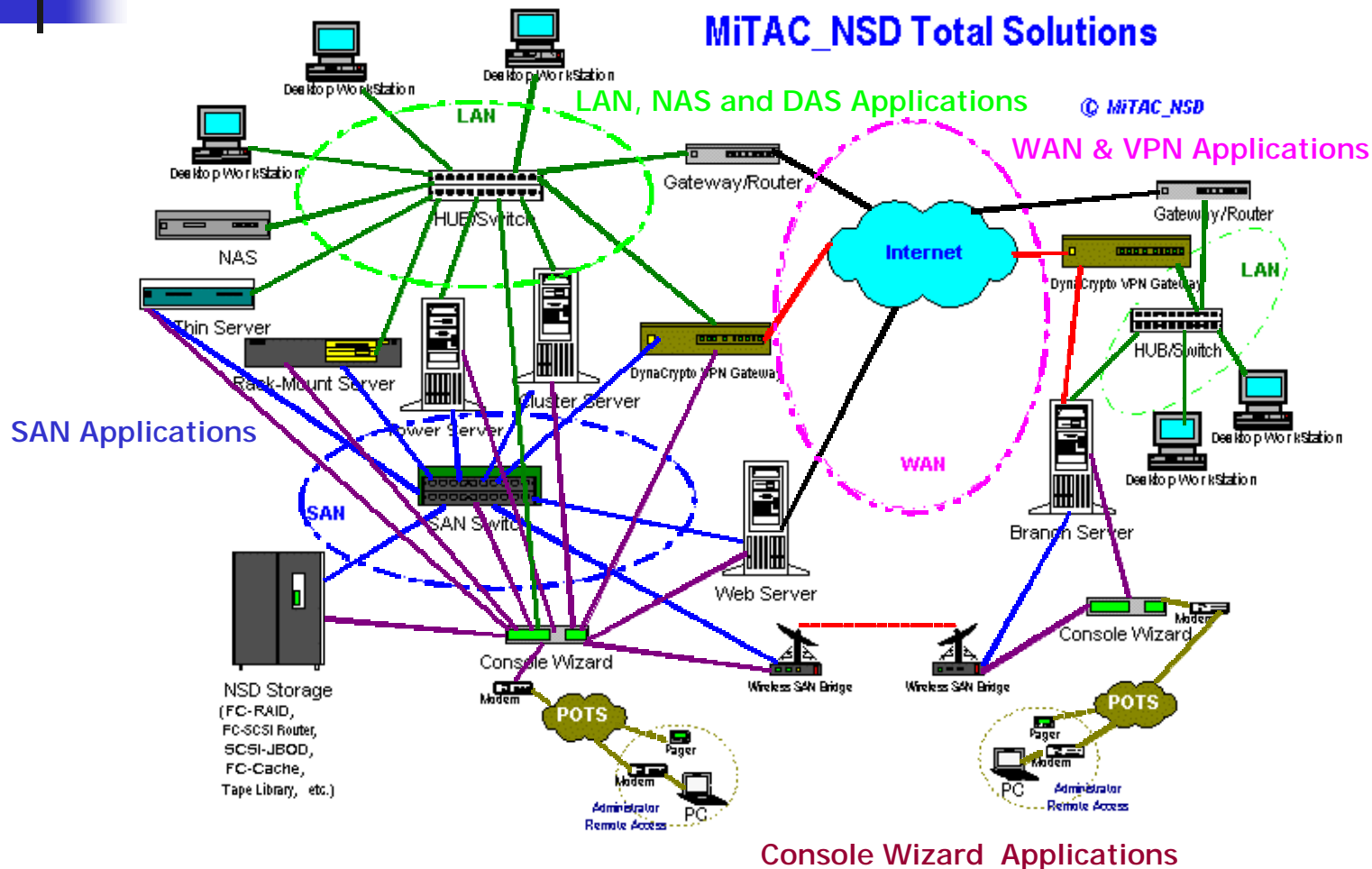


DynaCrypto™ Console Wizard

Remote Access and Monitoring Applications (Q3-01)



Enterprise Network Storages





THANK YOU

**MiTAC Industrial Corp.
Network Storage Division
41968 Christy St., Fremont CA 94538 USA
(510) 656-5288**