

ExtremeWare™

Enterprise Manager

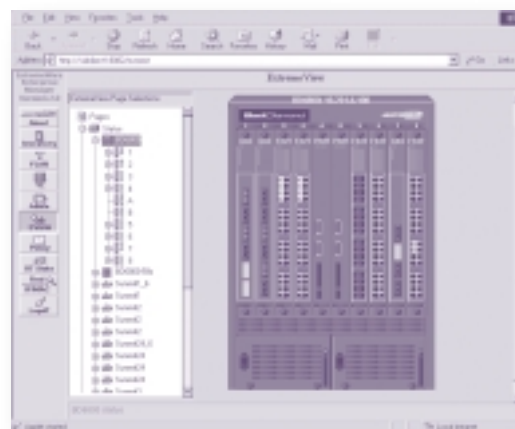
ExtremeWare™ Enterprise Manager 2.1 (EEM) is an integrated application suite that simplifies configuration, troubleshooting, status monitoring, and policy-based QoS management of IP-based networks. EEM offers a comprehensive set of network management applications, accessible from a workstation with a Java-enabled web browser.

Part of the ExtremeWare Enterprise Manager software suite, Extreme's policy management software provides layer-independent policy enforcement, which enables you to enforce policies in Layers 1-4, regardless of whether your Extreme switches are operating at Layer 2 or Layer 3. Extreme's policy management software also provides LAN/WAN support for selected Cisco equipment.

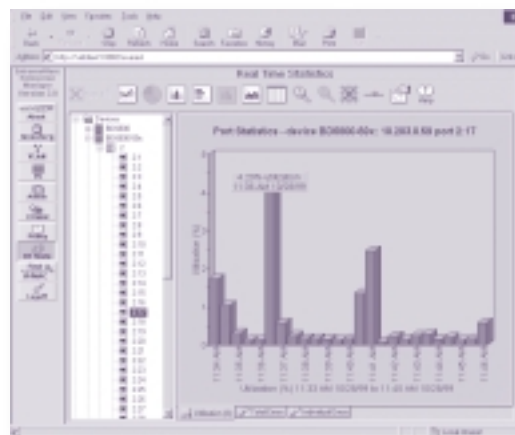
ExtremeView, an integrated part of EEM, offers four handy features in one easy-to-use application. An active switch front panel display allows ease of status monitoring. The ExtremeView Vista multi-switch proxy offers the convenience of viewing web pages residing on multiple switches.

The ExtremeWare Enterprise Manager software suite offers the following applications:

- Policy-Based Management – protects the delivery of ERP applications, provisions voice-over-IP traffic and policy manages broadcast traffic; offers dynamic user to port mapping of QoS policies
- ExtremeView – offers extensive switch configuration and status monitoring for Summit, BlackDiamond and Alpine switches
- VLAN Manager – configure and view network-wide VLANs
- Inventory Manager – simple and fast discovery of network devices; categorize switches and ports into groups
- MAC/IP Address Finder – troubleshoot the network with address location and isolation by mapping MAC and IP addresses to switch ports
- Real-time Statistics – plot RMON data using a variety of graph formats; print graphs and tables
- Administration – user/password configuration; configure RADIUS as a server or a client
- SmartTraps – detects changes to switch configurations and automatically dispatches this info to all relevant databases and clients



The Status window provides graphical device views of port-link status, power-supply status, environmental status, and physical configuration.



The Real-Time Statistics Tool provides an easy-to-use interface for viewing multi-port, multi-device port statistics in real-time.



ExtremeWare™

Enterprise Manager

Specifications

Switch Requirements

Extreme Switch Platform

All Summit Switches

ExtremeWare Versions Supported

ExtremeWare v2.1.7 or Later

Version 5.0 or later is required for policy management support

BlackDiamond

ExtremeWare 3.0.9b4 or later (3.0.9b4 is a patch release to address an agent issue found in v3.0.9b3)

Version 5.0 or later is required for Policy Management support

Alpine

ExtremeWare v6.1 or greater

Server Requirements

Server Platform

Windows NT SP3, 4.0

Windows NT 4.0 with Service Pack 3 or Later

Requirements

128 MB RAM (256 MB recommended)

200 MB disk space

300 MHz Pentium-compatible processor

Solaris 2.6 or Later

Ultra 5 or Higher processor

128 MB RAM (256 recommended)

200 MB disk space

Client Requirements

Platform

NT 4.0, Win '95, Win '95

Browser Configuration Description

IE 5.0, or IE 4.0, version 4.72.3110.8 or later (as displayed in "About Internet Explorer" from the "Help" pull-down menu).

The browser must have the Microsoft 5.x JVM.

Solaris 2.5.1, 2.6, or 2.7, or HP-UX 10.20

Netscape Navigator/Communicator 4.07 or later.

Network Management Platform Integration Requirements

Server Platform

Windows NT SP3, 4.0

Windows NT 4.0 with Service Pack 3 or Later

Solaris 2.6 or Later

IOS Platform

HP UX 10.20, Solaris 2.6 and 2.7, NT 4.0

Sol 2.67, Solaris 2.6 and 2.7, NT 4.0

Sol 2.67, Solaris 2.6 and 2.7, NT 4.0

Ordering Information

Product	Order Number	Description
ExtremeWare Enterprise Manager 2.x	81002	Enterprise management application suite offers configuration and status monitoring and policy-based networking for Summit and BlackDiamond switches.
ExtremeWare Enterprise Manager 2.0	81002U	Upgrade to Enterprise Manager 2.x for 1.x users. Requires copy of license agreement

For more product information from Extreme Networks, please call 1.888.257.3000 or 408.579.2800.

For more product information from Extreme Networks, please call 1.888.257.3000. 3585 Monroe Street, Santa Clara, CA 95051-1450
 Phone 408.579.2800 Fax 408.579.3000 Email info@extremenetworks.com Web www.extremenetworks.com



©2000 Extreme Networks, Inc. All rights reserved. Extreme Networks and BlackDiamond are registered trademarks of Extreme Networks, Inc. in certain jurisdictions. ExtremeWare, ExtremeWare Vista, ExtremeWorks, ExtremeAssist, ExtremeAssist1, ExtremeAssist2, PartnerAssist, Extreme Standby Router Protocol, ESRP, SmartTraps, Summit, Summit1, Summit4, Summit4/FX, Summit7i, Summit1i, Summit24, Summit48, Summit Virtual Chassis, SummitLink, SummitGbX, SummitRPS, Velocity, the BlackDiamond logo and the Extreme Networks logo are trademarks of Extreme Networks, Inc., which may be registered or pending registration in certain jurisdictions. The Extreme Turbodriven logo is a service mark of Extreme Networks, Inc., which may be registered or pending registration in certain jurisdictions. All other registered trademarks, trademarks and service marks are property of their respective owners. Specifications are subject to change without notice.