

Quickstart Procedure

DL3000 (DC-powered DIN rail Units) - using DL32 for Windows 95/98/NT

Please ensure that you have the correct cable when configuring the DL3000 through its DB9 serial port. See the manual for cable diagrams.

Step A – Install and Run DL32

1. Insert compact disk (or disk number one) of the windows configuration program (DL32) in the computer connected to the DataLink. Run '**setup.exe**' and follow the onscreen instructions to install the DataLink configuration program on your computer.
2. From the start button, select 'Programs' and then 'DataLink Technologies' to run the program.

Step B – Configuration Settings



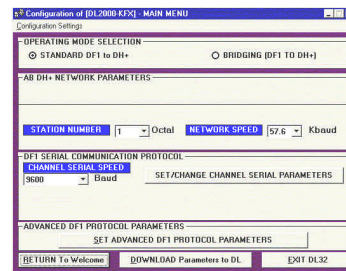
1. From the **DataLink Main Menu** click on the **FREESTANDING UNIT** button



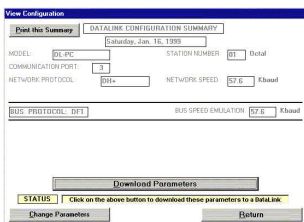
2. From the **Model Selection** menu, choose the appropriate product model



3. From the DL32 '**Welcome**' screen, first select the appropriate COM port the unit is connected to, then click the **CONFIGURE OPERATING PARAMETERS** button.



4. From the **Main configuration Menu**,
 - A - Select the **NETWORK PROTOCOL**: For typical configurations select **A-B DH+**, the appropriate DH+ network speed, and the station number which the DataLink will be occupying on the network (ensure that this station is available and that there are no conflicts with other devices or PLCs).
 - B - Under "DF1 Serial Communication Protocol" set the channel serial speed. Higher speeds allow for faster communication, but most software available will cause the DataLink's buffers to fill, impeding performance. At the outset, it is recommended that the default value of 9600 Baud be set.
 - C - Under **SET/CHANGE SERIAL PARAMETERS** and **SET DF1 ADVANCED PARAMETERS**, typical users will want to leave all the settings at their default values.



5. In the **View Configuration** screen, it is useful to press **PRINT THIS SUMMARY** for future reference. Settings can also be reviewed from this screen. If incorrect entries have been made, press **CHANGE PARAMETERS**, otherwise press **DOWNLOAD PARAMETERS**. Upon completion of the transfer, the DataLink is ready for normal operation on your network.

When all options have been selected press **DOWNLOAD PARAMETERS TO DL**