

Alcatel's 36111 MainStreet Multiprotocol Concentrator is a high capacity multiservice concentrator designed to handle the ever-increasing volume of data traffic on your network. It supports a wide range of protocols operating both on the user side (PAD, X.25 and SNA) and in the WANs (X.25, frame relay, ISDN).

Available in two chassis sizes (up to 24 and 80 lines), it is fully modular and can provide flexible access to your Alcatel network. It will also allow you to take advantage of the availability of high speed connections offered today by telecommunications operators.

The 36111 Multiprotocol Concentrator is managed by our graphically-rich Alcatel 5620 Network Manager (NM), formerly the 46020 Network Manager\*, providing a common platform and interface for network and service management.

The versatility of the 36111 will allow you to extend the range of your Alcatel network to the network edge.



Multiple data traffic  
from branch offices  
and application  
intensive sites



## Multiprotocol concentrator and converter

The 36111 supports a wide range of protocols that include:

- ▼ X.25, SVC and PVC
- ▼ SNA with SDLC/QLLC conversion
- ▼ Transparent HDLC (point-to-point)
- ▼ Siemens-Nixdorf HDLC (point-to-point and multipoint)
- ▼ BSC 3270, 2780, and 3780
- ▼ Asynchronous PAD (X.3, X.28, X.29)
- ▼ Transport of ISO basic mode protocols (NCR ISO, Burroughs Poll Select)
- ▼ Frame relay PVC and Annex G support
- ▼ ISDN switched access for X.25 (X.31)
- ▼ PSTN switched access (X.32 and V.25bis)

## Advanced routing

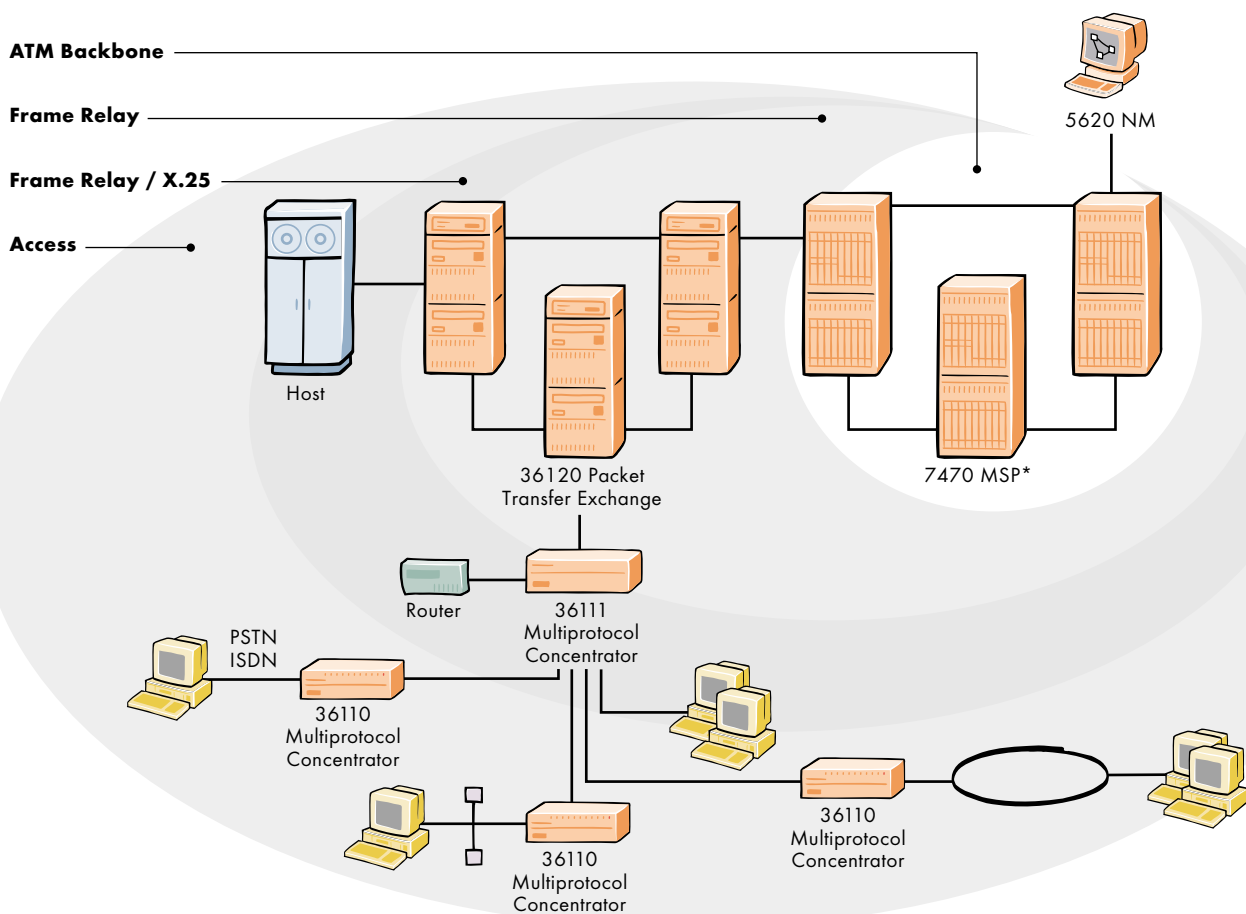
The 36111 concentrator can accept any routing plan – by time of day, priority, load balancing or by type of WAN service over switched networks (PSTN, ISDN), satellite links with Layer 2 and 3 modulo 128, leased lines and PSDN.

It can also handle all address translation, extension, deletion or insertion functions and provide automatic re-establishment of a X.25 call if cleared by the network.

## Access security

The 36111 concentrator can create closed user groups and provide calling address control through the confidentiality feature. NUI identification is available, as is XID frame identification when using the PSTN or ISDN networks.

### ▼ Alcatel frame relay solution architecture



\* The Alcatel 7470 Multiservice Platform (MSP), formerly the 36170 Multiservices Switch. This product belonged to the Newbridge family. Newbridge was acquired by Alcatel in May 2000.

## Ease of operation

The 36111 provides a full suite of features that allow you to easily operate and monitor the network. It includes:

- ▼ alarms, line and node statistics counters
- ▼ remote loopback (V.54)
- ▼ modem support
- ▼ downloading in operational mode
- ▼ integrated traffic generator and data scope

## Data optimization

The 36111 can optimize your data traffic by using Lempel-Ziv data compression, negotiable in each direction on a per virtual circuit (VC) basis. Packet size optimization is also available.

## Intelligent ISDN adaptation

The 36111 offers the following features on ISDN B and D channels:

- ▼ basic rate internode link (64 or 128 kb/s)
- ▼ software download and node configuration link
- ▼ node backup
- ▼ overflow link for leased lines, bandwidth-on-demand for medium speed links
- ▼ dynamic disconnect, closing of switched network port if there are no VCs or traffic
- ▼ 36111-24 supports up to 8 B channels
- ▼ 36111-80 supports up to 36 B channels
- ▼ access to PSDN via the D channel with data compression

## Network management

The 5620 Network Manager provides integrated remote management, including configuration of, and statistics collection for, the 36111 concentrator and other nodes in the network.

## Technical Summary

### Features

#### Maximum number of ports

- ▼ 36111-24: from 4 to 24 ports, out of which 8 or 16 are high speed lines
- ▼ 36111-80: from 4 to 80 ports, out of which 8 or 16 are high speed lines

#### Switching capacity

- ▼ 4500 pps in X.25, 7500 fps in frame relay

#### Maximum number of X.25 logical channels

- ▼ 4096 per high speed line
- ▼ 256 per protocol processor card line
- ▼ 4096 to 8704 per equipment, depending on configuration

#### Maximum number of frame relay DLCIs

- ▼ FRAD mode: 64
- ▼ Switch mode: 2048

#### Maximum number of WAN links

- ▼ 36111/24: 24 WAN links
- ▼ 36111/80: 80 WAN links

#### Maximum WAN link speed

- ▼ 2 Mb/s per high speed line
- ▼ 256 kb/s per low speed line

### Physical Interfaces

- ▼ 4 V.11 IUSC channels
- ▼ 4 V.24/V.28 channels
- ▼ 2 V.35 channels and 2 V.24/V.28 channels
- ▼ 2 V.11 channels and 2 V.24/V.28 channels
- ▼ 2 B+D ISDN and 2 V.24/V.28 channels

## Physical Description

### 24 line model

- ▼ Height: 14.1 cm (5.55 in.)
- ▼ Width: 48.4 cm (19 in.)
- ▼ Depth: 48.9 cm (19.25 in.)
- ▼ Weight: 7 to 11 kg (15.4 to 24.2 lb.)
- ▼ For 19 in. rack mounting on 24 line model: 3 units
- ▼ For 19 in. rack mounting on 80 line model: 6 units

### 80 line model

- ▼ Height: 27.8 cm (10.94 in.)
- ▼ Width: 48.4 cm (19 in.)
- ▼ Depth: 49.8 cm (19.6 in.)
- ▼ Weight: 12 to 23 kg (26.4 to 50.6 lb.)

## Operating Environment

- ▼ 5° to 40° C (41° to 104° F)
- ▼ 20% to 80% relative humidity, noncondensing

## Standards Compliance

- ▼ EN 60950
- ▼ UL 950
- ▼ CSA 950

## Power

- ▼ For 24 line model: 0.34 to 0.63 A, 46 to 100 W
- ▼ For 80 line model: 0.6 to 2.1 A, 54 to 270 W

For more information [www.cid.alcatel.com](http://www.cid.alcatel.com)

Alcatel, the Alcatel logo, MainStreet and Newbridge are registered trademarks of Alcatel. All other trademarks are the property of their respective owners. Alcatel assumes no responsibility for the accuracy of the information presented, which is subject to change without notice.

© 2000 Alcatel. All rights reserved. 10343  
3CL 00469 0072 TQZCA Ed.01



ARCHITECTS OF AN INTERNET WORLD