

Alcatel's 36110 MainStreet is a multiservice concentrator designed to handle the ever-increasing volume of data traffic on your network. It supports a wide range of protocols operating both on the user side (PAD, X.25, SNA, IP, IPX) and in WANs (X.25, frame relay, ISDN).

Available in two chassis sizes (up to 8 and 20 lines), it is fully modular and can provide flexible access to your Alcatel network. It will also allow you to take advantage of the availability of high speed connections offered today by telecommunications operators.

The 36110 Multiprotocol Concentrator is managed by our graphically-rich Alcatel 5620 Network Manager (NM), formerly the 46020 Network Manager*, providing a common platform and interface for network and service management.

Fully scalable to meet your communications needs today and in the future, the 36110 Multiprotocol Concentrator allows you to extend the range of your Alcatel network by merging the user environment – synchronous and asynchronous terminals, SNA architectures, LANs – with the required WAN communication services: X.25, frame relay, ISDN, PSTN.



Multiple data traffic
on a single platform



Multiprotocol concentrator and converter

The 36110 supports a wide range of protocols that includes:

- ▼ X.25, SVC and PVC
- ▼ SNA with SDLC/QLLC conversion
- ▼ Transparent HDLC (point-to-point)
- ▼ Siemens-Nixdorf HDLC (point-to-point and multipoint)
- ▼ BSC 3270, 2780, and 3780
- ▼ Asynchronous PAD (X.3, X.28, X.29)
- ▼ Transport of ISO basic mode protocols (NCR ISO, Burroughs Poll Select)
- ▼ IP and IPX on Ethernet and Token Ring
- ▼ SNA/NetBios converter on Ethernet and Token Ring
- ▼ Ethernet bridging
- ▼ IP and IPX routing on RIP
- ▼ Frame relay PVC and RFC 1490/Annex G support
- ▼ ISDN switched access for X.25 (X.31)
- ▼ PSTN switched access for X.25 (X.32 and V.25bis)

Advanced routing

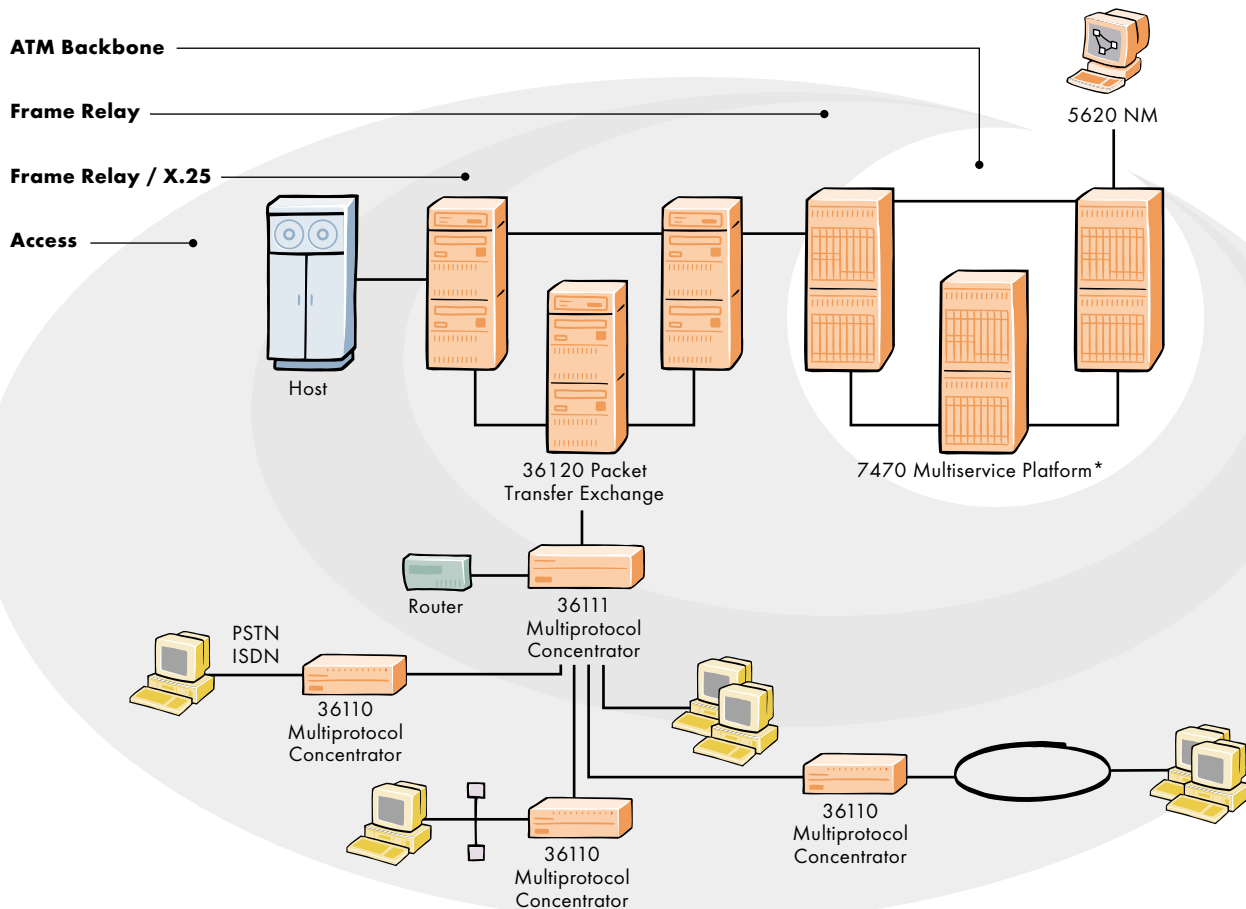
The 36110 can accept any routing plan – by time of day, priority, load balancing or by type of WAN service over switched networks (PSTN, ISDN), satellite links with Layer 2 and 3 modulo 128, leased lines and PSDN.

It can also handle all address translation, extension, deletion or insertion functions and provide automatic re-establishment of a X.25 call if cleared by the network.

Access security

The 36110 can create closed user groups and provide calling address control through its confidentiality feature. NUI identification is available, as is XID frame identification when using the PSTN or ISDN networks.

▼ Alcatel frame relay solution architecture



Ease of operation

The 36110 provides a full suite of features to allow you to easily operate and monitor your network. It includes:

- ▼ alarms, line and node statistics counters
- ▼ remote loopback (V.54)
- ▼ modem support
- ▼ integrated traffic generator and data scope

IP and IPX routing

The 36110 can perform IP and IPX routing from an Ethernet or Token Ring architecture, as well as Ethernet bridging.

In addition, the 36110 performs X.25 level filtering (CUG), simple configuration with suggested default and IP/X.25 encapsulation conforming to RFC 877/1356.

Local management is available through the ARP protocol conforming to RFC 826 and the ICMP protocol, conforming to RFC 792. IP and Ethernet statistics are available. RIP on IP and IPX is also supported.

Converter bridge in Token Ring environment

Available features on the 36110 Multiprotocol Concentrator include the following:

- ▼ multipoint SNA 802.2/LLC.2 bridge compatible with source route bridging (SRB)
- ▼ SDLC/Token Ring converter
- ▼ Token Ring/QLLC converter
- ▼ NetBIOS name caching
- ▼ multipoint NetBEUI bridge compatible with source route bridging
- ▼ filtering of broadcasts
- ▼ local polling and acknowledgment

Data optimization

The 36110 can optimize your data traffic by using Lempel-Ziv data compression, negotiable in each direction on a per virtual circuit (VC) basis. Packet size optimization is also available.

Intelligent ISDN adaptation

The 36110 offers the following features on ISDN B and D channels:

- ▼ basic rate internode link (64 or 128 kb/s)
- ▼ software download and node configuration link
- ▼ node backup
- ▼ overflow link for leased lines, bandwidth-on-demand for medium speed links
- ▼ dynamic disconnect, closing of switched network port if there are no VCs or traffic
- ▼ 36110 supports 2 B channels
- ▼ access to PSDN via the D channel with data compression

Network management

The 5620 Network Manager provides integrated remote management, including configuration of and statistics collection for the 36110 and other nodes in the network.

Alcatel, the Alcatel logo, MainStreet and Newbridge are registered trademarks of Alcatel. All other trademarks are the property of their respective owners. Alcatel assumes no responsibility for the accuracy of the information presented, which is subject to change without notice.

© 2000 Alcatel. All rights reserved. 10342

3CL 00469 0071 TQZCA Ed.01

Technical Summary

Features

Maximum number of ports

- ▼ 36110-8: from 2 to 8 lines
- ▼ 36110-20: from 2 to 20 lines

Switching capacity

- ▼ 700 pps in X.25, 1000 fps in frame relay

Maximum number of X.25 logical channels

- ▼ 512 per X.25 port
- ▼ 1024 per 36110

Maximum Number of frame relay DLCIs

FRAD mode

- ▼ 36110-8: 24
- ▼ 36110-20: 40

Switch mode

- ▼ 36110-8 and 36110-20: 64

Maximum number of WAN links

- ▼ 36110/8: 8 WAN links
- ▼ 36110/20: 16 WAN links

Maximum WAN link speed

- ▼ 512 kb/s

Physical Interfaces

- ▼ 2 V.24/V.28 channels
- ▼ 2 V.35 channels
- ▼ 1 V.24/V.28 channel and 1 V.11 channel
- ▼ 2 V.11 channels
- ▼ ISDN BRI card (1 BRI port)
- ▼ Ethernet hub card with 8 RJ45 and 1 AUI connectors
- ▼ Ethernet card with 1 BNC, 1 AUI and 1 RJ45 connector
- ▼ 4 or 16 Mb/s Token Ring card with 1 DB9 and 1 RJ45 connectors

Physical Description

36110-8

- ▼ Height: 22 cm (8.8 in.)
- ▼ Width: 14 cm (5.6 in.)
- ▼ Depth: 34 cm (14.4 in.)
- ▼ Weight: 4.5 to 5.5 kg (9.9 to 12.1 lb.)

36110-20

- ▼ Height: 44 cm (17.6 in.)
- ▼ Width: 14 cm (5.6 in.)
- ▼ Depth: 34 cm (14.4 in.)
- ▼ Weight: 9 to 12 kg (19.8 to 26.4 lb.)
- ▼ Rack-mountable option available
- ▼ For 19 inch rack mounting (36110-20 only): 3 units

Operating Environment

- ▼ 5° to 40° C (41° to 104° F)
- ▼ 20% to 80% relative humidity, noncondensing

Safety Standards Compliance

- ▼ EN 60950
- ▼ UL 950
- ▼ CSA 950

EMC Standards

- ▼ EN 50022-B
- ▼ EN 50082-A
- ▼ FCC Class A Part 15

Power

- ▼ For 8 line model: 0.10 to 0.15 A, 12 to 21 W
- ▼ For 20 line model: 0.15 to 0.30 A, 12 to 45 W

* This product belonged to the Newbridge family. Newbridge was acquired by Alcatel in May 2000.

