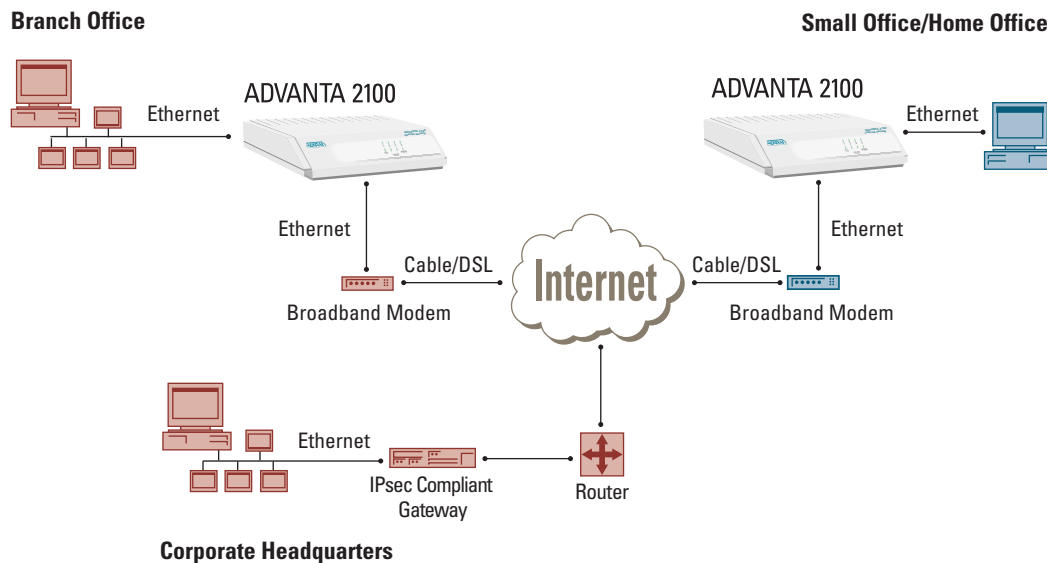


# Internet Security

## Remote VPN

Featuring  
ADVANTA 2100



The ADVANTA 2100 provides all the necessary components required to secure an integrated VPN solution. It protects the corporate network against attacks with its built-in stateful inspection firewall and provides data security through encryption, authentication and key exchange. In the application depicted above, it can be used to connect branch offices, small office/home office (SOHO), and even business partners to a corporate environment using an industry standard Internet Protocol Security (IPSec) compliant gateway. The ADVANTA 2100 supports both ESP and AH protocols and provides secure communication over potentially insecure network components.

The ADVANTA 2100 encrypts the data being sent out onto the network based on either the Data Encryption Standard (DES) or 3DES. MD5 or SHA1 can be used to maintain data integrity as it is transported across the public infrastructure. In addition, Internet Key Exchange (IKE) can be used for user authentication supporting public and private keys or digital certificates, assuring that the proper VPN tunnel is established and that the tunnel has not been redirected or compromised.

Independent of the Internet service being provided, the ADVANTA 2100 resides between the LAN and cable or DSL modem and can connect a single workstation onto the corporate network, or as in the branch office, multiple workstations and/or an entire LAN. A router can be used in conjunction with the ADVANTA 2100 or its internal router can be used for routing IP traffic. The ADVANTA 2100 also hides the IP address of machines from the external world by performing Network Address Translation (NAT). In addition, the ADVANTA 2100 provides a comprehensive stateful inspection firewall solution that protects an organization's internal network from intruders, denial of service attackers, backdoor entries onto your network, and other assaults.

With the ADVANTA 2100, companies can reduce recurring wide-area network cost of traditional private networks, improve data security, increase network performance and availability, and simplify overall network operations.

## SOLUTION FEATURES

- IPSec VPN tunneling with DES/3DES encryption
- Internet Key Exchange (IKE) for user authentication
- IPSec Gateway Interoperability
- Stateful inspection firewall security
- Internal router
- Network Address Translation
- Logging and alerts
- Web-based management
- 10/100BaseT Ethernet interface for flexible connectivity

**ADTRAN**

## ADVANTA 2100 1200361L1

- IPSec VPN Tunneling
- DES and 3DES Encryption
- Stateful Inspection Firewall
- Internet Key Exchange (IKE)
- Web-based management



### ADVANTA 2100 backplane

- WAN: RJ-45 10/100 Auto-Sensing Ethernet interface
- LAN: RJ45 10/100 Auto-Sensing Ethernet interface
- Serial port for off-net configuration

## PRODUCT SPECIFICATIONS

### PHYSICAL INTERFACE

- WAN: Auto-sensing 10/100BaseT Ethernet Port (RJ-45)
- LAN: Auto-sensing 10/100BaseT Ethernet Port (RJ-45)
- Serial port

### FIREWALL

- Stateful inspection firewall
- Application content filtering
- Cyber assault protection
- HTTP relay

### ADDRESS TRANSLATION

- Basic NAT (1:1)
- NATP (Many:1)
- Reverse NAT (translation of an inbound session's destination IP address)

### IPSEC TUNNEL

- Encapsulating Security Payload (ESP)
- Authentication Header (AH)
- Manual key management or automatic key management using Internet Key Exchange (IKE)
- MD5-HMAC 128-bit authentication algorithm
- X.509 certificate support
- SHA1-HMAC 160-bit authentication algorithm
- DES-CBC 56-bit encryption
- 3DES-CBC 168-bit encryption

### DIAGNOSTICS

#### Front Panel Status LEDs

- Power
- VPN - enabled, transmit, receive
- LAN - transmit, receive
- WAN - transmit, receive

### ADMINISTRATION

- Web-based management
- SYSLOG logging in WELF format
- E-mail alerts (SMTP)
- User and group access control policies based on time-of-day
- User accounting policy statistics
- PPPoE

#### DHCP

- Server (to manage IP addresses on local network)
- Client (to acquire the WAN-side IP address from service provider)

### ROUTING

- TCP/IP
- Static routes
- RIP V1

### ENVIRONMENT

#### Operating Temperature

- 0° to 50 °C (32° to 122 °F)

#### Storage Temperature

- -20° to 70 °C (-4° to 158 °F)

#### Relative Humidity

- Up to 95%, non-condensing

### PHYSICAL

#### Size

- 1.625" H, 9.0" W, 6.375" D

#### Weight

- 2 lbs (shipping weight)

#### Power

- 12 vDC Power
- 4 W

### AGENCY APPROVALS

- FCC Part 15 (Class B)
- UL 1950, 3rd Edition

### PRODUCT INCLUDES

- Manual
- 12 vDC power supply
- 6 ft. crossover Ethernet cable

## For More Information

[www.adtran.com](http://www.adtran.com)

ADTRAN, Inc.  
901 Explorer Blvd.  
Huntsville, AL 35806

General Information  
800 9ADTRAN  
[info@adtran.com](mailto:info@adtran.com)

Applications Engineering (Pre-Sale)  
800 615-1176

