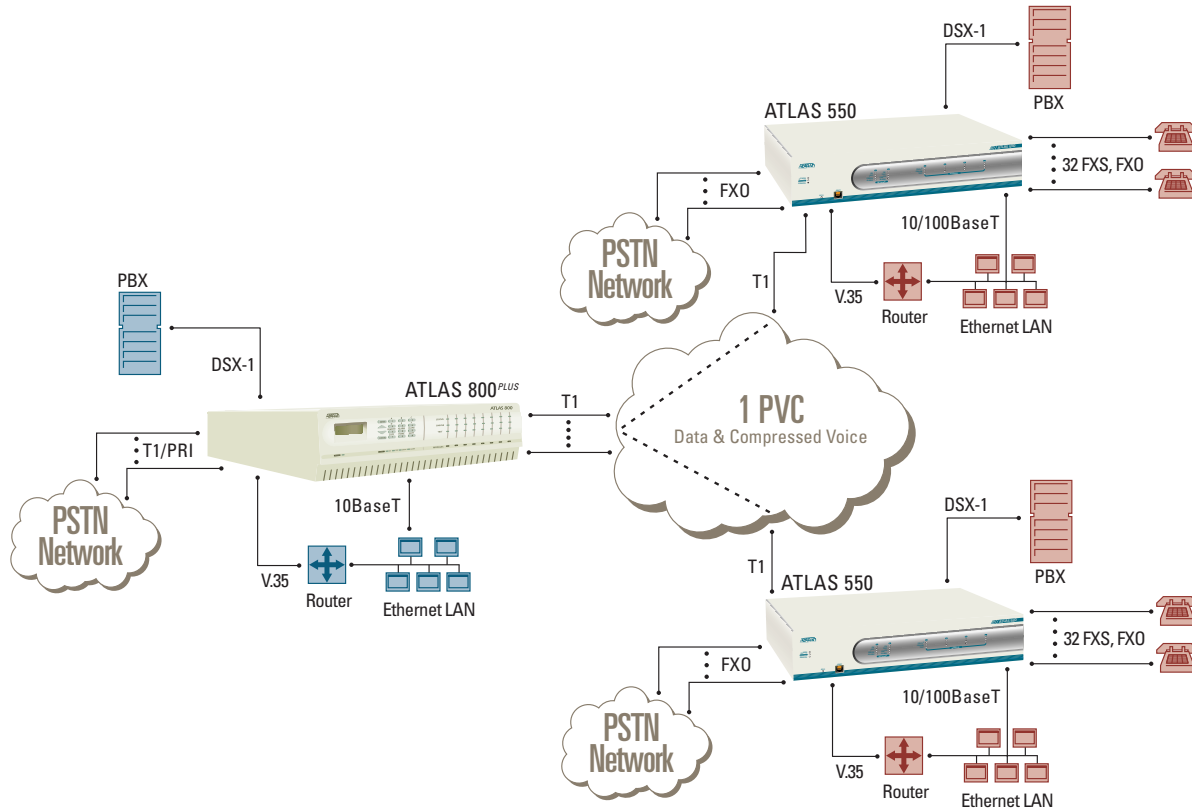


# Enterprise Networks

Integrating Voice/Data over Frame Relay

Featuring  
ATLAS 800<sup>PLUS</sup> and ATLAS 550



The ATLAS 550 and ATLAS 800<sup>PLUS</sup> are two members of ADTRAN's market-leading Enterprise Integrated Access Device (IAD) family. As pictured above, the ATLAS 550 and ATLAS 800<sup>PLUS</sup> complement each other nicely across a Frame Relay network using only a single permanent virtual circuit (PVC) per site. In this scenario, the ATLAS 800<sup>PLUS</sup> acts as a Frame Relay concentrator and switch. As a switch, it routes data and voice on a call-by-call basis. It also serves as a voice switch to off load a company's PBX call switching functions.

The ATLAS 550 and ATLAS 800<sup>PLUS</sup> provide 6:1 voice compression for transporting voice over the Frame Relay network, eliminating intra-company long distance voice costs. The advanced engineering of the ATLAS 550 and ATLAS 800<sup>PLUS</sup> provides end-users a powerful choice for voice traffic. Intelligent voice switching will either compress the voice signals for near toll-grade transport over the Frame Relay network, or route calls to the local public telephone network for full 64 kbps toll-grade voice conversations. This functionality is available in the ATLAS 550 and ATLAS 800<sup>PLUS</sup>, providing a unique method of establishing an intelligent and hybrid voice network.

Both the ATLAS 550 and the ATLAS 800<sup>PLUS</sup> concentrate Frame Relay data directly to the Ethernet LAN or to external Frame Relay router via a V.35 or T1 interface.

## SOLUTION FEATURES

- Dynamically allocates bandwidth between voice and data
- Reduces long-distance voice costs
- Reduces Frame Relay costs by using only one PVC per site
- ATLAS 550 supports up to 32 POTS/FXS
- Integral IP router

**ADTRAN**

## ATLAS 550 1200305L4

- Functions as a Frame Relay concentrator/switch and includes intelligent voice call routing
- 6-slot modular platform
- Two slots for T1/PRI network interfaces
- Four slots for optional user modules
- Hot-swappable modules
- 10/100BaseT Ethernet LAN interface
- SNMP and Telnet management
- Includes Frame Relay and IP routing software and one T1/PRI interface

## T1/PRI Network Interface Module 1200307L1

- One network interface to T1 or PRI circuits, independently configured for DS-1, DSX-1, or PRI operation
- Supports Drop and Insert and Digital Access Cross-Connect Systems (DACS)
- Network interface for primary rate ISDN access switching and remote access
- Any T1 or PRI circuit can serve as timing source for system

## Octal FXS Module 1200309L1

- Provides 8 foreign exchange station (FXS) local loop interfaces
- All 8 DS0s may be mapped to any DS0 on any of the network interfaces or dynamically switched
- Loop start, ground start, PLAR, DPO, and wink delay (for DNIS), operation
- Supports dial pulse addressing
- 2-wire interface through an RJ-48 modular connector

ADTRAN is a registered trademark of ADTRAN, Inc. All other registered trademarks and trademarks mentioned in this publication are the property of their respective owners.

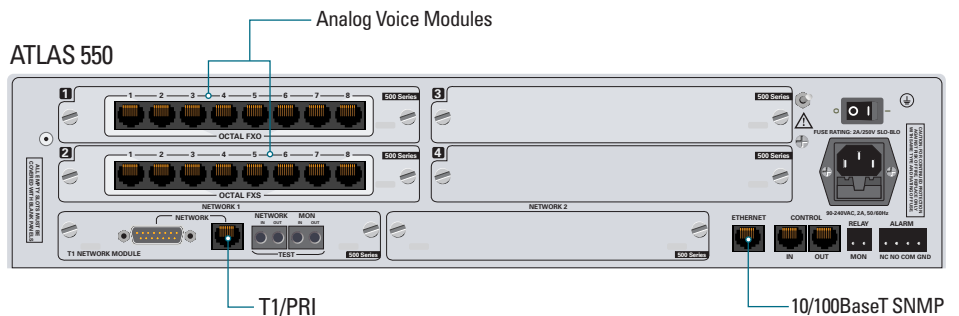


Printed in the U.S.A. on recycled paper.  
C1ABSWTCHNG-125A December 1999  
©1999 ADTRAN, Inc. All rights reserved.

## Octal FXO Module 1200310L1

- Provides 8 foreign exchange office (FXO) local loop interfaces
- All 8 DS0s may be mapped to any DS0 on any of the network interfaces or dynamically switched

- Loop start, ground start, DPT, and tandem operation
- Extends phone lines to remote sites over T1 circuits
- 2-wire interface through an RJ-48 modular connector



## ATLAS 550

- This configuration is ideally suited for Frame Relay sites with a need for analog voice.
- The Octal FXO module combined with ATLAS 550 voice-switching software provides users the choice in voice communications, that is, whether to transport voice over Frame Relay for near-toll-grade voice quality or over the local carrier network for full toll-grade quality.

## For More Information

[www.adtran.com](http://www.adtran.com)

ADTRAN, Inc.  
901 Explorer Blvd.  
Huntsville, AL 35806

General Information  
800 9ADTRAN  
[info@adtran.com](mailto:info@adtran.com)

Applications Engineering (Pre-Sale)  
800 615-1176