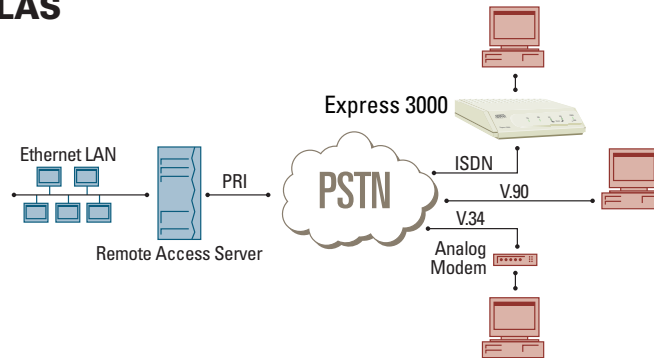


# Remote Access

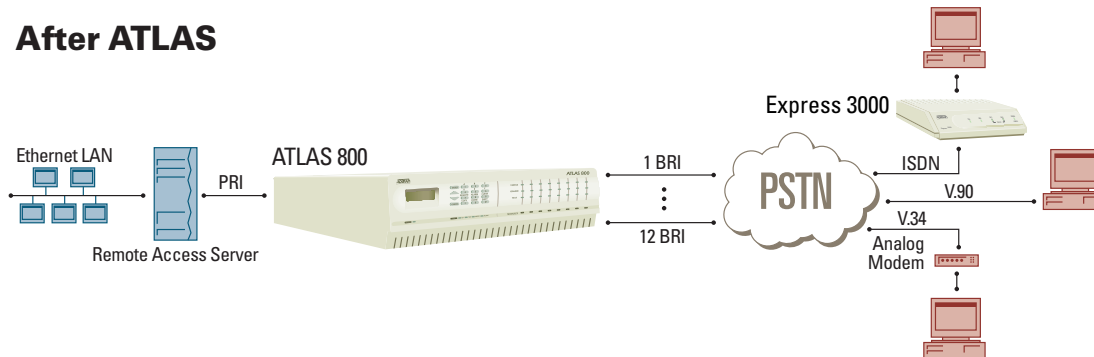
Featuring  
ATLAS 800

## Converting BRI to PRI

### Before ATLAS



### After ATLAS



In many parts of the country, a PRI circuit is more expensive than multiple BRI circuits. For example, a PRI circuit may cost \$2,100 per month, and a single line BRI may cost \$50 per month. Twelve BRI circuits can be purchased for a cost of \$600 per month and provide the same B-channel capacity of a PRI. Many Internet Service Providers (ISPs) use remote access concentrators that have an integral PRI front-end (see Before ATLAS). An ATLAS 800 can be placed in front of the concentrator (see After ATLAS) and convert multiple BRIs to a PRI, saving an ISP recurring monthly charges. In this example, the customer would save \$1500 per month. At this rate, the ATLAS equipment will pay for itself in less than seven months.

### SOLUTION FEATURES

- Preserves the customer's existing equipment
- Offers payback in months
- Lowers monthly costs
- Provides economical system that is easy to install
- Maintenance via SNMP or VT100

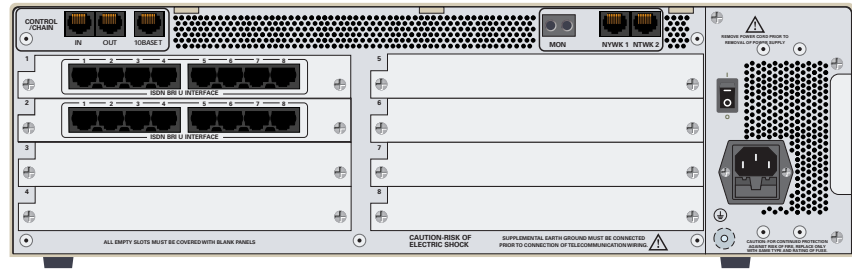
**ADTRAN**

## ATLAS 800

1200180L1

- Two PRI ports on chassis
- Each PRI port provides 23 simultaneous B-channels

## ATLAS 800



- ATLAS 800 chassis
- Two Octal BRI Modules provide 16 BRI ports (P/N 1200186L1)

## Express 3000™

1203153L2

- Standalone ISDN modem/terminal adapter with U-Interface
- Asynchronous rates to 230,400 bps
- Always On/Dynamic ISDN (AO/DI)
- Analog modem pass-thru port

## Express 3000



- Express 3000 supports asynchronous rates only. If synchronous rates are required, use ADTRAN's Express 3010 (P/N 1200239L1)

ADTRAN is a registered trademark of ADTRAN, Inc.  
Express 3000 is a trademark of ADTRAN, Inc.



Printed in the U.S.A. on recycled paper.  
C1ABRTACS-107A September 1999  
©1999 ADTRAN, Inc. All rights reserved.