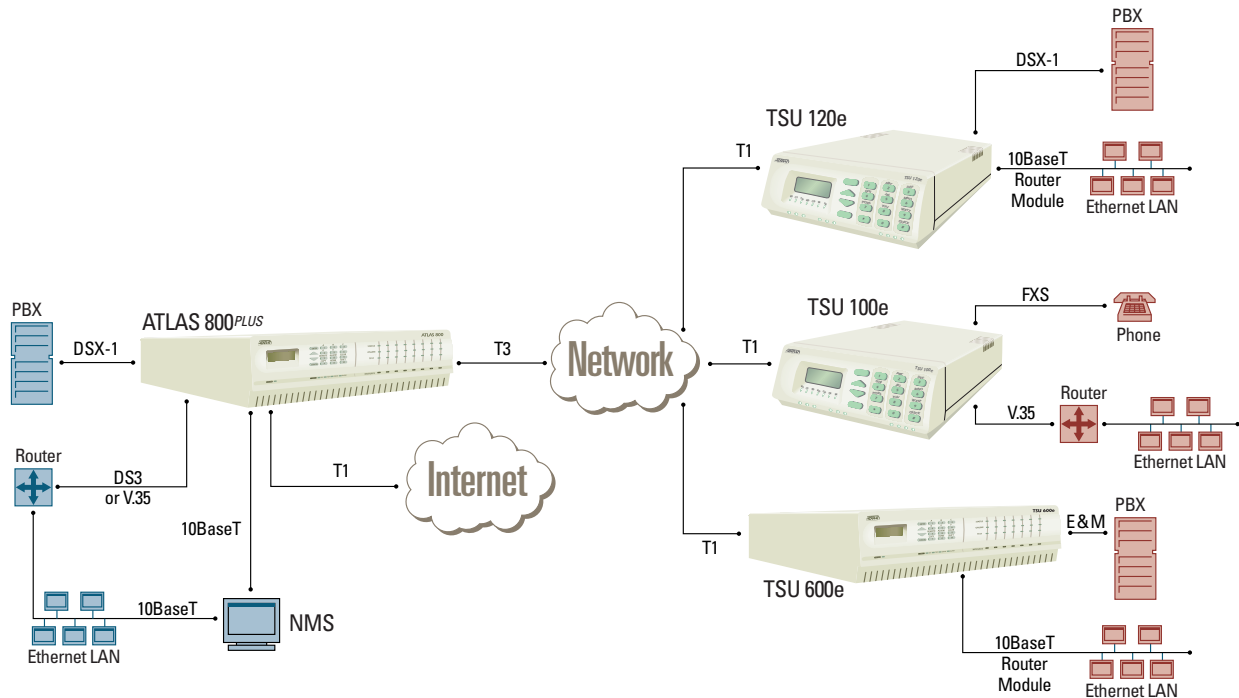


# Integrated Access

Multiple T1s and T3 Circuits

Featuring  
ATLAS 800<sup>PLUS</sup>



Customers that have many T1 circuits coming into their host site may find it cost effective to bring those T1s into their site on a T3 circuit. On the average, the break-even point for a T3 is 8-10 T1 circuits. In the above example, a channelized T3 has been delivered to the host site to connect voice and data between a corporate office and its remote sites. ATLAS is being used at the host to not only terminate the T3 circuit, but also to terminate the T1/PRI circuit that provides connection to the Internet. ATLAS manages multiple types of access lines into the site and provides switching, routing, and the integration necessary to provide a single source solution at an affordable price.

The remote sites are terminating the single T1 using the TSU™ family of multiplexers. The first site is using a TSU 120e™ with an optional router card to provide digital voice and IP/IPX data to the location. The second site is using the TSU 100e™ with an optional Quad FXS module to provide four analog POTS lines and a V.35 data interface to the router. The third site is using the TSU 600e™ with an optional router card and E&M modules to provide PBX trunk interfaces and IP/IPX data. All the TSU products are fully SNMP manageable.

## SOLUTION FEATURES

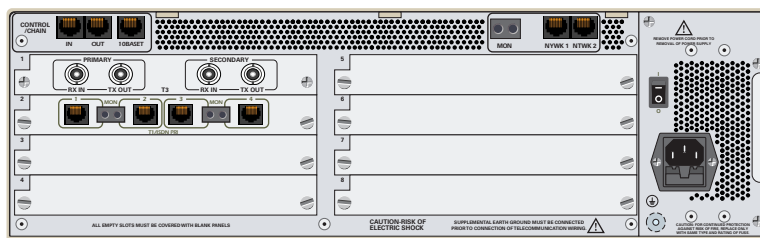
- Integrates voice, data and video
- Supports multiple T1s and T3
- Complete end-to-end solution
- Modular and scalable

**ADTRAN**

**ATLAS 800<sup>PLUS</sup> 1200180L1**

- Two T1/PRI ports on chassis
- T3 D/I module provides FT3 drop-and-insert interface

**ATLAS 800<sup>PLUS</sup>**



**TSU120e 1202129L1**

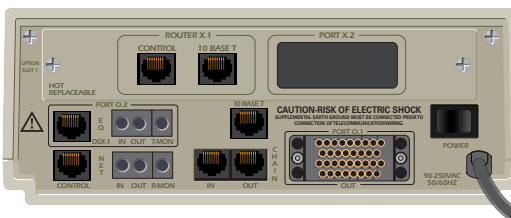
- DSX-1 and V.35 built on
- Embedded SNMP
- One option slot

- Atlas 800<sup>PLUS</sup> 10BaseT port supports IP routing over Frame Relay with software upgrade (P/N 1200263L1)
- Atlas 800<sup>PLUS</sup> can be purchased with Frame Relay software (P/N 4200226L1 AC, 4200228L1 DC)
- T3 drop-and-insert module terminates T3 and pass FT3 for high speed interfaces (P/N 1200225L1) or another channelized T3 device
- Quad T1/PRI module (P/N 1200185L2) supports four T1/FT1s

**TSU 100e 1202052L1**

- V.35 interface built on
- Embedded SNMP
- One option slot

**TSU 120e**

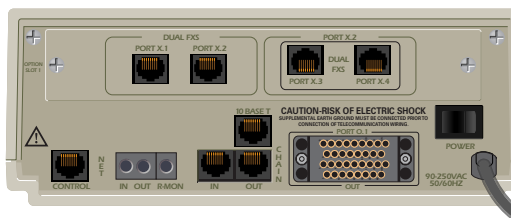


**TSU 600e 1202076L1**

- Six option slots
- Embedded SNMP

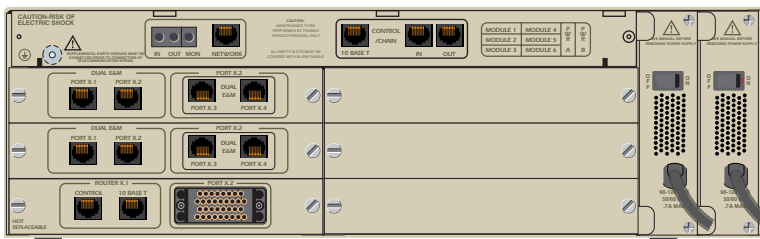
- Router module routes IP/IPX for Frame Relay or PPP data (P/N 1200350L1)

**TSU 100e**



- Quad FXS single board with four RJ voice interfaces will not support a message waiting indicator (P/N 1200300L1)

**TSU 600e**



- Dual E&M/T0 module provides two E&M interfaces (2- or 4-wire) and accepts a plug-on card (module P/N 1200105L3, plug-on P/N 1200106L3)
- Router module routes IP/IPX for Frame Relay or PPP data (P/N 1200350L1)

ADTRAN is a registered trademark of ADTRAN, Inc. TSU, TSU 120e, TSU 100e and TSU 600e are trademarks of ADTRAN, Inc.



Printed in the U.S.A. on recycled paper. C1ABINACS-112A September 1999 ©1999 ADTRAN, Inc. All rights reserved.