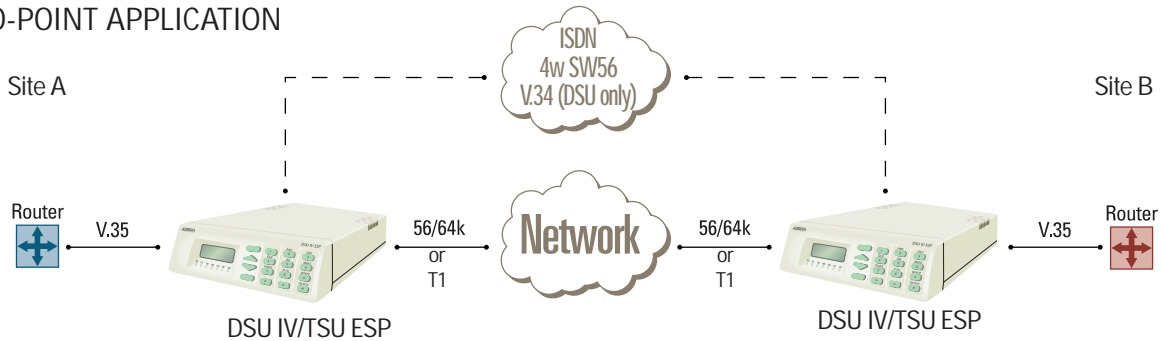


Disaster Recovery

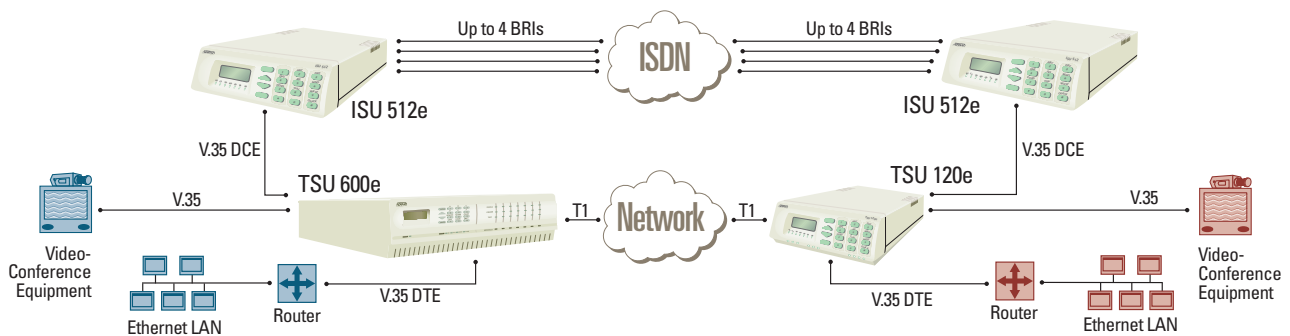
Dedicated Circuits

Featuring
DSUs, TSUs & ISUs

POINT-TO-POINT APPLICATION



INTEGRATED ACCESS APPLICATION



Any business can experience temporary network downtime as a result of unexpected events such as fire, flood or simple technician error. For recovery from such a disaster on a dedicated wide area network, ADTRAN provides a variety of solutions.

Point-toPoint Application

As illustrated in the diagram, the DSU IV ESP™ (56/64 kbps DSU/CSU) or the TSU ESP (FT1/T1 DSU/CSU) connects LAN traffic from Site 1 to Site 2. If a problem develops in the primary circuit, the DSU will sense a failure, and automatically initiate a call using the dial back-up card. These products support backup via ISDN, Switched 56, or analog (DSU IV ESP only) circuits.

Integrated Access Application

For customers with multiple data services (such as video and LAN traffic) on a single T1, avoiding downtime is critical. In this diagram, the company uses an ADTRAN TSU 600e multiplexer with an Nx56/64 dial backup card and a TSU 120e multiplexer with built in dial backup functionality to protect the network. If the primary line is lost, the units initiate dial backup through an ISU 512e, which BONDS up to four BRI lines to achieve a backup bandwidth of 512 kbps.

SOLUTION FEATURES

- Reliable, cost-effective dial back-up solution
- Rates from 56k to T1
- Field-upgradable
- Modular platform
- Provided by the industry DSU leader
- Solutions for any size network

ADTRAN

DSU IV ESP 1204011L1

- Supports rates of 2.4 kbps to 57.6 kbps
- Embedded SNMP via SLIP port
- Optional switched backup

TSU ESP 1200169L1

- Single port T1/FT1 DSU/CSU
- Embedded SNMP via SLIP port
- Optional switched backup

TSU 600e 1202076L1

- Modular T1/FT1 DSU/CSU with 6 option slots
- Embedded SNMP via SLIP and 10BaseT

TSU 120e 1202129L1

- Modular T1/FT1 DSU/CSU with one option slot
- Integral V.35 DTE and DSX-1 ports
- V.35 DTE port with built in dial backup
- Embedded SNMP via SLIP and 10BaseT

ISU 512e 1203086L1

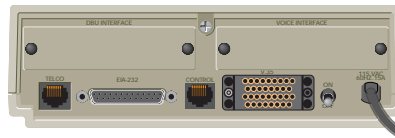
- Terminates 4 BRI lines
- Supports BONDing and MLPPP
- Embedded SNMP via 10BaseT

ADTRAN is a registered trademark of ADTRAN, Inc. TSU, TSU IQ, TSU IQ+ and DSU IQ are trademarks of ADTRAN, Inc.



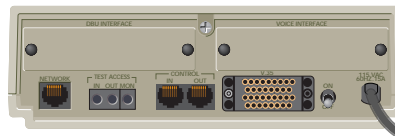
Printed in the U.S.A. on recycled paper.
C1ABDR-105A March 1999
©1999 ADTRAN, Inc. All rights reserved.

DSU IV ESP



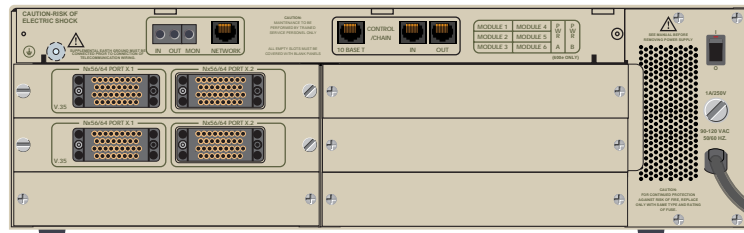
- Backup options:
 - 4-wire SW56 (P/N 1204001L1)
 - V.34 (P/N 1204002L1)
 - 1 B+D ISDN (P/N 1204004L1)
- 10BaseT optional Ethernet card for SNMP (P/N 1204005L1)

TSU ESP



- Backup options:
 - 4-wire SW56 (P/N 1204001L1)
 - 2 B+D ISDN (P/N 1204004L1)
 - EXT DBU (P/N 1204006L1)
- 10BaseT optional Ethernet card for SNMP (P/N 1204005L1)

TSU 600e



- Nx56/64 DBU module for data and dial backup (P/N 1200158L1#HS)

TSU 120e



- Need cable for DBU (P/N 1200196L1)

ISU 512e

