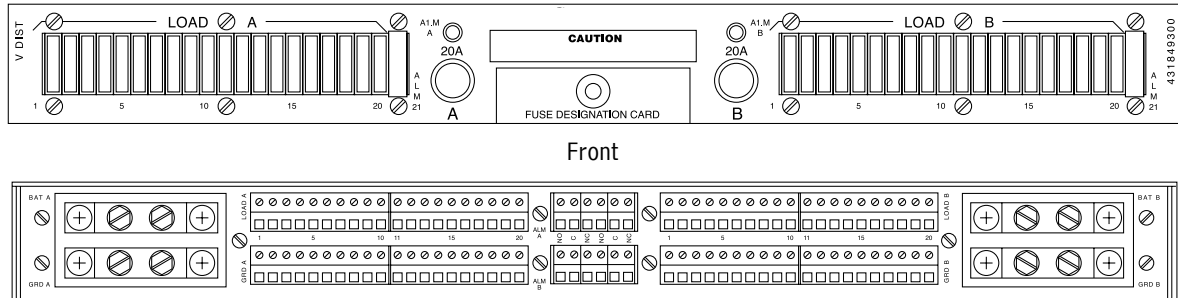


# Fuse Panels, Fuse Holders and Fuses

## Fuse Panel Assembly

23" (58.42cm) FUSE PANELS								
Part No.	Description of Panels E/W Fuse Positions and Accessories	Fuse Type	Fuse Table	Panel Height	Load Term	Notes		
431605500	(4) 0-5 A, (16) Additional Positions as Req'd.	70	A	1-3/4" (4.45cm)	Wrap & Solder	2, 8		
431802200	(20) 0-5 A	70	A	1-3/4" (4.45cm)				
431849300	(20-20) 0-10 A Split Load (20 A Max Per Side) Load & Grd. Rtn. Term Blocks	GMT	B	3/4" (1.91cm)	26-14 Ga Lugs not Required	5		
431622800	(50) 0-10 A (Accessory Grd. Bar 436105900)	GMT	B	3-1/2" (8.89cm)	Wire Wrap	5		
431707200	(8) 0-30 A	TPN	D	5-1/4" (13.34cm)	1/4" (.64cm) Stud			
431707300	(4) 0-30 A & (4) 31-60 A	TPN	D	5-1/4" (13.34cm)				
431707400	(8) 31-60 A	TPN	D	5-1/4" (13.34cm)				
431707500	(8) 0-30 A E/W A 200 A Shunt	TPN	D	5-1/4" (13.34cm)				
431707600	(4) 0-30 A & (4) 31-60 A E/W A 300 A Shunt	TPN	D	5-1/4" (13.34cm)				
431707700	(8) 31-60 A E/W A 400 A Shunt	TPN	D	5-1/4" (13.34cm)				
431848900	(16) 0-60 A	TPS	C	7" (17.78cm)				
431407700	(2) 61-100 A	TPN	E	5-1/4" (13.34cm)			1/2" (1.27cm) Stud	
431604900	(4) 61-100 A	TPN	E	5-1/4" (13.34cm)				
431407800	(2) 101-200 A	TPN	F	5-1/4" (13.34cm)				
431604800	(4) 101-200 A	TPN	F	10-1/2" (26.67cm)				
431407300	(1) 61-400 A	TPL	G	5-1/4" (13.34cm)				
431407500	(1) 61-400 A E/W A 400 A Shunt	TPL	G	5-1/4" (13.34cm)				
431605000	(2) 61-400 A	TPL	G	7" (17.78cm)	9			
431605200	(2) 61-400 A E/W (2) 400 A Shunts	TPL	G	7" (17.78cm)	9, 10			
437417800	(2) 61-400 A A/F (2) Shunts & Ammeters	TPL	G	7" (17.78cm)				
431707900	(4) 61-400 A	TPL	G	10-1/2" (26.67cm)	3/4" (1.91cm) Stud (61-400 A) 7/8" (2.23cm) Stud (61-600 A) See Table M			
431407400	(1) 61-600 A	TPL	G	5-1/4" (13.34cm)				
431407600	(1) 61-600 A E/W A 600 A Shunt	TPL	G	5-1/4" (13.34cm)				
431605100	(2) 61-600 A	TPL	G	7" (17.78cm)				
431605300	(2) 61-600 A E/W (2) 600 A Shunt	TPL	G	7" (17.78cm)				
437417900	(2) 61-600 A A/F (2) Shunts & Ammeters	TPL	G	7" (17.78cm)			9, 10	
431707800	(4) 61-600 A	TPL	G	10-1/2" (26.67cm)				
431401000	(1) 61-600 A Fuse Switch Unit	TPL	G	7" (17.78cm)			9	
431430700	(2) 61-600 A Fuse Switch Unit	TPL	G	12-1/4" (31.12cm)				
431432100	(1) 61-600 A Fuse Switch Unit A/F Ammeter and Shunt	TPL	G	7" (17.78cm)			9, 11	
431201100	(1) 800-1,200 A	KRPC	H	5-1/4" (13.34cm)	Lug Adpt.	12, 13		
426172900	(1) 800-1,200 A Fuse Switch Unit W/WO Shunt	KRPC	H	12-1/4"		12, 14		

## Fuse Cabinet Assembly



Rear

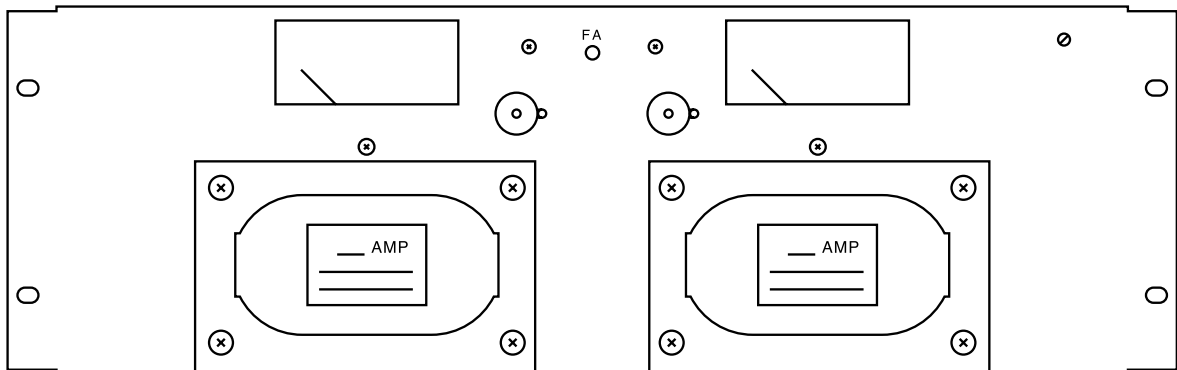
Part Number 431849300

# Fuse Panels, Fuse Holders and Fuses

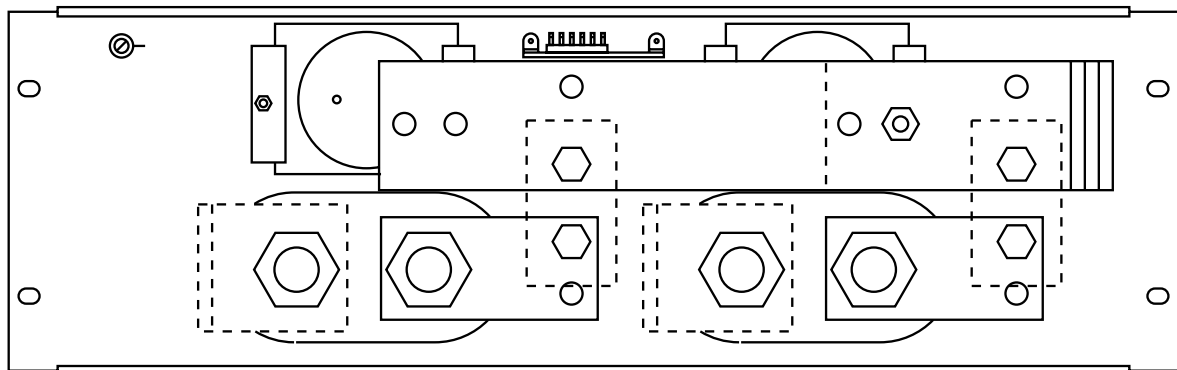
## Fuse Panel Assembly (continued)

19" (48.26cm) FUSE PANELS						
Part No.	Description	Fuse Type	Fuse Table	Panel Height	Load Term	Notes
431605400	(4) 0-5 A, (12) Additional Positions as Req'd.	70	A	1-3/4" (4.45cm)	Wrap & Solder	2, 8
431703800	(16) 0-5 A	70	A	1-3/4" (4.45cm)		
431705900	(16) 0-5 A E/W Grd. Bar	70	A	3-1/2" (8.89cm)		2
431653100	(40) 0-10 A (Accessory Grd. Bar 436105900)	GMT	B	3-1/2" (8.89cm)	Wire Wrap	5
431848300	(10-10) 0-10 A Split Load	GMT	B	1-3/4" (4.45cm)	Term Block #6 Screw	5, 7
431848800	(20-20) 0-10 A Split Load (Accessory Grd. Bar 436105900)	GMT	B	3-1/2" (8.89cm)	Wire Wrap	5
431849300	(20-20) 0-10 A Split Load (20 A Max Per Side) Load & Grd. Rtn. Term Blocks	GMT	B	1-3/4" (4.45cm)	26-14 Ga Lugs not required	5
431703900	(8) 0-5 A, (4) 0-30 A	70 & TPN	A, D	5-1/4" (13.34cm)	1/4" (.63cm) Stud	
431652800	(6) 0-30 A	TPN	D	5-1/4" (13.34cm)		
431652900	(3) 0-30 A & (3) 31-60 A	TPN	D	5-1/4" (13.34cm)		
431653000	(6) 31-60 A	TPN	D	5-1/4" (13.34cm)		
431849800	(12) 0-60 A	TPS	C	7" (17.78cm)		
431406800	(1) 61-400 A	TPL	G	5-1/4" (13.34cm)	Lug Adpt.	15
431408300	(1) 61-600 A	TPL	G	5-1/4" (13.34cm)		

### 61-600 amp Fuse Panel



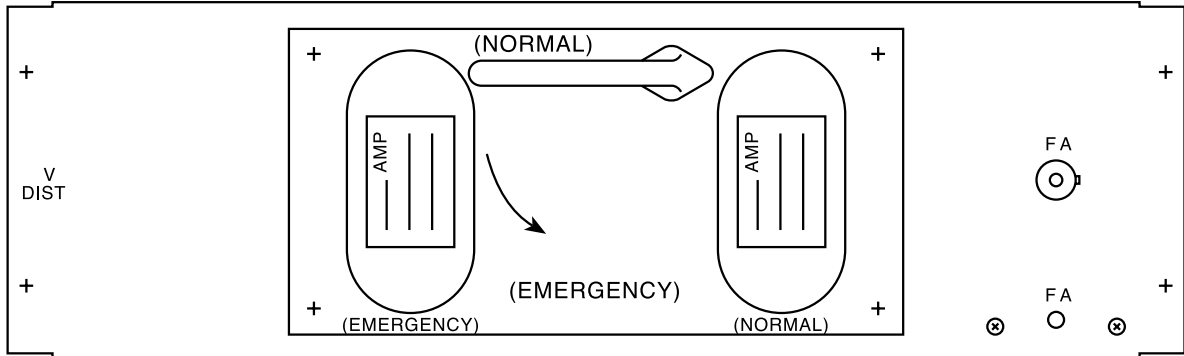
Front



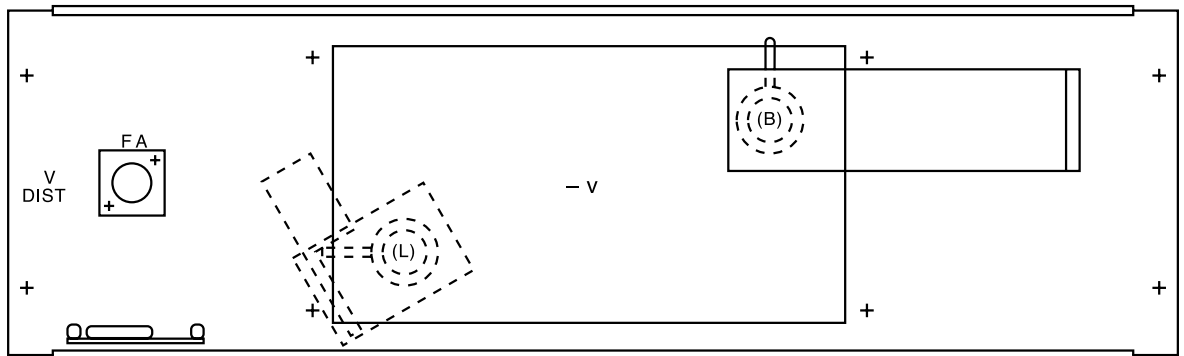
Rear

# Fuse Panels, Fuse Holders and Fuses

61-600 amp Fuse and Switch Distribution Panel

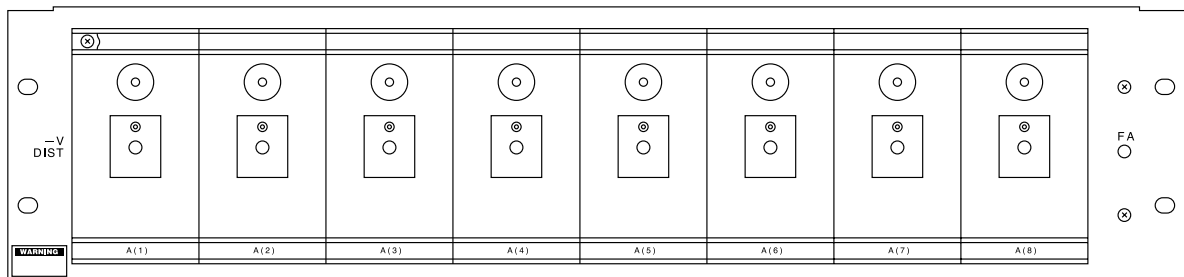


Front

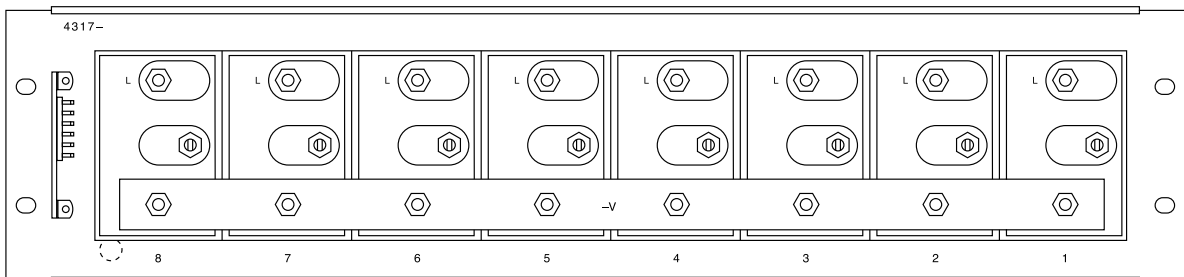


Rear

Typical 0-30 amp or 31-60 amp Distribution Fuse Panel



Front

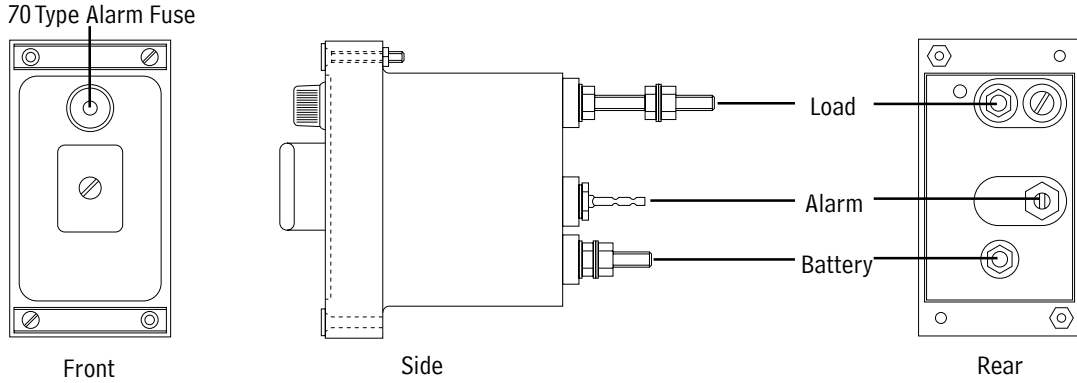


Rear

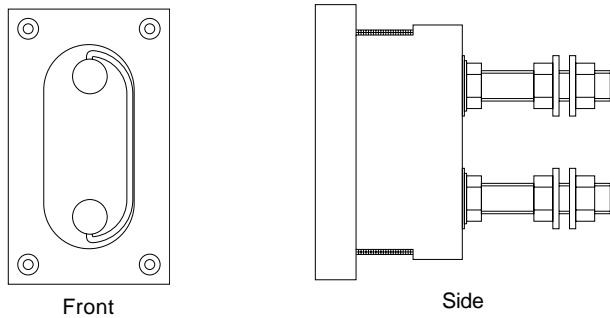
# Fuse Panels, Fuse Holders and Fuses

## Fuse Holders and Fuses

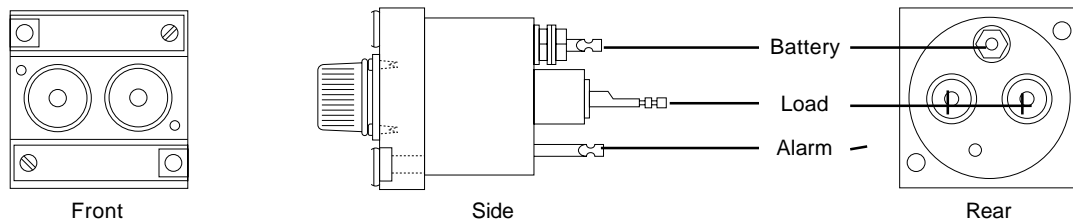
### 0-30 or 31-60 amp Fuse Block (cartridge type)



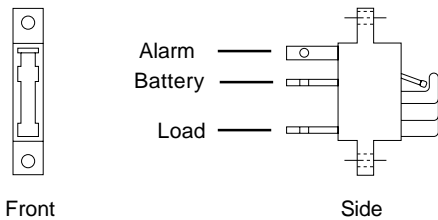
### 61-600 amp Fuse Block (bolt-in type)



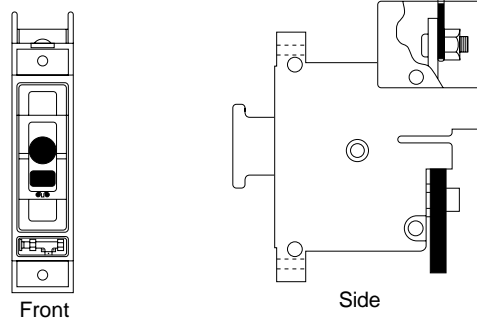
### 0-5 amp Twin Fuse Block (70 Type)



### 0-10 amp Fuse Block (GMT type)



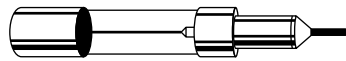
### TPS Fuseholders



# Fuse Panels, Fuse Holders and Fuses

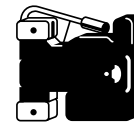
## Fuses

TABLE A			
70 Type		Designation Pins	
amp Capacity	Part No.	Color	Part No..
0.18	248620100	Yellow	248628100
0.25	248620200	Violet	248628200
0.25*	248620300	Violet/White	248628300
0.5	248620500	Red	248628400
0.75	248620600	Brown	248628600
1.33	248620800	White	248628900
2	248621200	Orange	248629200
3	248621500	Blue	248629400
5	248621700	Green	248629700



70 Type Fuse

TABLE B		
GMT Type		
amp Capacity	Part No.	Color
0.25	248610200	Violet
0.5	248610300	Red
0.75	248610500	Brown
1.33	248610700	White
2	248610800	Orange
3	248610900	Blue
4	248611100	Brown/White
5	248611000	Green
10	248611200	Red/White
Dummy	248872600	
Safety Cover	248898700	



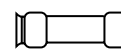
GMT Type Fuse

TABLE C	
TPS Type	
amp Capacity	Part No.
3	248230900
5	248231000
6	248231200
10	248231500
15	248231800
20	248232100
25	248232400
30	248232700
40	248233300
50	248233900
60	248234200
Bussmann GMT-A ALM Fuse for Use with TPS Holders	
0.5 ( Red )	248610301
Safety Cover	248898700

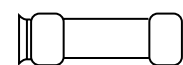


TPS Type

TABLE D	
TPN Type	
amp Capacity	Part No.
1	248230500
3	248230800
6	248231100
10	248231400
15	248231700
20	248232000
25	248232300
30	248232600
35	248232900
40	248233200
45	248233500
50	248233800
60	248234100



TPN Type  
1-30 amp



TPN Type  
35-60 amp

# Fuse Panels, Fuse Holders and Fuses

## Fuses (continued)

TABLE E	
TPN Knife Blade Type	
amp Capacity	Part No.
70	248234400
80	248234700
90	248235000
100	248235300

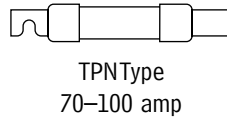


TABLE F	
TPN Knife Blade Type	
amp Capacity	Part No.
110	248235600
150	248235900
175	248236200
200	248236500

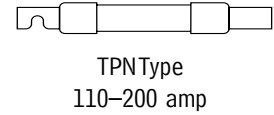


TABLE G	
TPL Type	
amp Capacity	Part No.
70	248251500
80	248252000
100	248252600
150	248253300
200	248254000
225	248254500
250	248255000
300	248255700
400	248257000
500	248258000
600	248259000

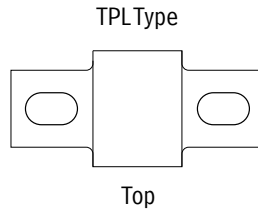
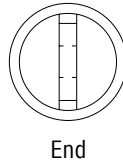


TABLE H	
KRP-C Type	
amp Capacity	Part No.
800	248548200
1000	248549600
1200	248550100



## Accessories

TABLE I		
Ammeters and Shunts		
amp Capacity	Ammeter Part No.	Shunt Part No.
100	292486500	298274400
200	292487000	298274700
300	292487300	298274900
400	292487500	298275000
500	292487600	298275200
600	292487800	298275300

TABLE J		
Ammeters and Shunts		
amp Capacity	Ammeter Part No.	Shunt Part No.
100	292486500	298274402
200	292487000	298274702
300	292487300	298274902
400	292487500	298275002
500	292487600	298275202
600	292487800	298275302

TABLE K	
Shunts	
amp Capacity	Shunt Part No.
800	298275400
1000	298275500
1200	298275600

# Fuse Panels, Fuse Holders and Fuses

## Accessories (continued)

TABLE L	
Bus Bars	
Number of Fuse Blocks Connected	Part No.
2	341210700
3	341211400
4	341211900
5	341251200
6	341251400
7	341251000
8	341254100

TABLE M	
Lugs and Adapters	
Description	Part No.
Adapter E/W (1) 2-4/0 Saddle lug	483554500
(1) 0-500MCM Saddle lug	245619900
(1) 600-1000MCM Saddle lug	245619000
Adapter E/W (2) 1/0-500MCM Saddle lugs	423554600
Adapter for Crimp lugs 3/8" (.95cm) HDW. (1" [2.54cm] C-C) or 1/2" (1.27cm) HDW. (1-3/4" [4.45cm] C-C)	362755800

## Application Notes

- Unless otherwise specified (Notes 2, 7 & 12), an alarm LED card part number 486331800, for use with power board equipment with a fuse alarm circuit, is furnished as standard. When no power board alarm circuit is available and an alarm LED and relay is required, specify panel e/w optional alarm LED and relay card part number 486331600. Specify voltage and polarity.
- This assembly is equipped with an alarm LED and relay card part number 486331600. If not required, it may be replaced with a 486331800 alarm LED card. Specify voltage and polarity.
- These fuse panel assemblies can be used for  $\pm 12$ , 24, 48 OR 130 volt applications unless otherwise specified (Note 5).
- Apparatus mounting blanks are provided for all unequipped positions.
- To be used up to 60 Volt DC only.
- Contact Marconi Communications for additional information concerning any specific fuse panel. Specify part number and request assembly drawing.
- This assembly has an alarm relay and lamp arranged for  $\pm 24$  or 48 volt only. Specify voltage and polarity.
- When a special arrangement is required, specify additional quantity of twin fuse block(s), part number 248840300 and busbar(s) required per Table L.
- Unless otherwise specified, output lugs and lug adapters are not provided, order from Table M and lug tables in this catalog per job requirements.
- Ammeters and shunts are not furnished with assembly and must be ordered from Table J per job requirements.
- Ammeters and shunts are not furnished with assembly and must be ordered from Table I per job requirements.
- This assembly is equipped with a fuse alarm resistor tapped for 250, 500 or 2,500 ohms for connection to a fuse alarm relay circuit.
- Lug adapters are not part of this assembly, order (1) or (2) part number 363221900 lug adapter (A/F 3/8" (.95cm) HDW 1" [2.54cm] C-C or 1/2" [1.27cm] HDW 1-3/4" [4.45cm] C-C). Order (1) part number 63556800 busbar for fuse to discharge bus when required.
- Assembly is furnished with a lug adapter A/F (3) sets of mounting holes 3/8" (.95cm) HDW 1" (2.54cm) C-C. When a shunt is required, order assembly equipped with a shunt mounting block part number 381413300 and shunt from Table K as required.
- Assembly is furnished with (2) lug adapters A/F (2) sets of mounting holes 3/8" (.95cm) HDW 1" (2.54cm) C-C and (1) set of mounting holes 1/2" (1.27cm) HDW 1-3/4" (4.45cm) C-C.

# Fuse Panels, Fuse Holders and Fuses

## How to Order

1. Specify part number for 19" (48.26cm) or 23" (58.42cm) fuse panel assembly as required.
2. Specify part number and quantities of fuses, shunts, lug adapters and other accessories from associated tables and application notes as required.
3. Specify quantity and part number of lugs and adapters required (see Table M or catalog pages LLP 6-9 & 6-10).



[www.marconi.com/power](http://www.marconi.com/power)

**Marconi Communications**  
1122 F Street  
Lorain, OH 44052  
800-800-1280  
Fax: 440-246-4876

© 2000 Marconi Communications Inc.  
Printed in the USA. All rights reserved. Any unauthorized reproduction or transmission without the prior consent of Marconi Communications Inc. is prohibited.