



SR3000 Internet ThinRouter

Ideal WAN Access for Small Branch Offices and SMEs

Overview

MOXA SR3000 Internet ThinRouter provides fast, cost-effective, secure, and reliable connections for connecting small branch offices to headquarters. This is accomplished via a 56K – T1/E1 leased line or asynchronous dial-up line, allowing small branch offices and SMEs (Small to Medium Enterprises) to share information, connect remote locations, and access the Internet. SR3000 helps small branch offices and SMEs streamline their operations, effectively manage costly resources, and increase communication within and between offices.

SR3000 Internet ThinRouter performs at speeds up to 2 Mbps via a synchronous WAN interface supported by a digital leased line, T1/E1, and 10/100 Mbps auto-sensing Ethernet connection, making it easy to migrate to Fast Ethernet networks. It also includes one Async backup interface that supports shared dial-out services for LAN-to-ISP/Internet connections with speeds up to 460.8 Kbps, preventing systematic paralysis due to WAN disconnection.

SR3000 also supports priority queuing for network traffic control. It allows specified hosts with a higher priority to transmit data, even as the amount of network traffic increases.

Moxa's advanced technology gives network administrators a friendly interface to efficiently manage, and easily monitor SR3000 Internet Router from either a local console port, or via Telnet, from anywhere on the network. Containing robust features and standard networking software, MOXA SR3000 Internet ThinRouter provides your company with an ideal networking solution.

Features

- WAN (Sync) port: auto-detectable V.35/RS-232 interfaces
- WAN (Sync) port speed from 56K to T1/E1
- One auto-sensing 10/100 Mbps Ethernet interface
- Backup (Async) port with speed up to 460.8 Kbps
- Supports Sync/Async PPP, Cisco HDLC for WAN connection
- Supports PAP, CHAP security
- Supports Static, RIP-1/2 routing
- Supports NAT (Network Address

- Translation) for private IP applications
- Supports packet filtering for firewall protection
- Network management over the network using SNMP
- Supports priority queuing for network traffic control
- Supports DHCP for network connection
- Direct console, Network Wizard, or network telnet configuration
- Supports multi-functional LED indicators
- HUB/No HUB switch for LAN connection

Benefits

- Economic WAN solution
- Simple installation and maintenance
- Flexible WAN connectivity
- High reliability and security
- Easy network management

Applications

- Internet/Intranet access
- Branch office connectivity
- LAN-to-LAN connection

Specifications

Interface

| | |
|------------------------|---|
| WAN (Sync) | V.35, RS-232 auto-detectable |
| LAN | One 100 Base-Tx (10/100 Mbps) |
| Backup Console (Async) | RS-232 Console Port (RJ45), also used for backup |
| LED Indicators | Power LED, LAN Link/Data LED, WAN CD LED, WAN Link LED, WAN Tx LED, WAN Rx LED, Backup/Console LED, Backup Link LED |

Performance

| | |
|-----------------------|-----------------------|
| WAN (Sync) Port Speed | 56K – T1/E1 |
| Backup (Async) port | |
| Speed | 9600 bps – 460.8 Kbps |

Protocols

| | |
|----------------|-----------------------------------|
| Network | TCP/IP, ARP, UDP, ICMP, NAT, DHCP |
| WAN (Sync) | PPP, Cisco HDLC |
| Backup (Async) | PPP |
| Application | Telnet |
| Security | PAP, CHAP |
| Management | SNMP, MIB-2 |
| IP routing | Static, RIP-1, RIP-2 |

Power & Environment

| | |
|--------------------|--|
| Power requirements | DC 12V power adapter (DIN Plug Type), 1.2A |
| Operating temp. | 0 – 55°C |

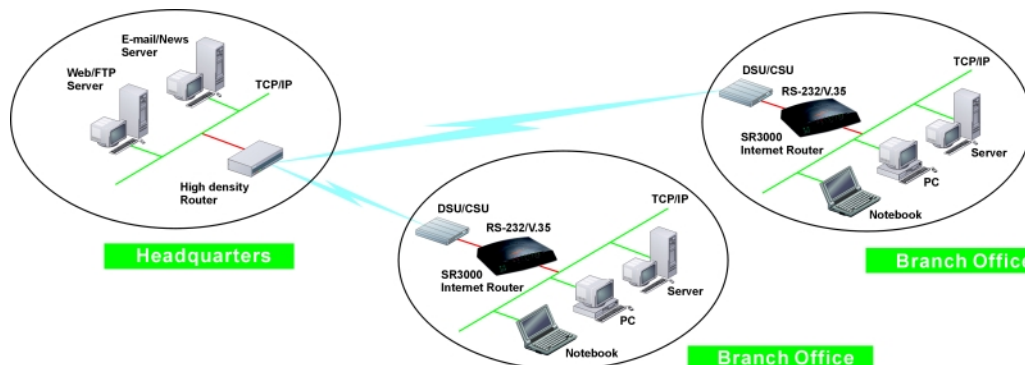
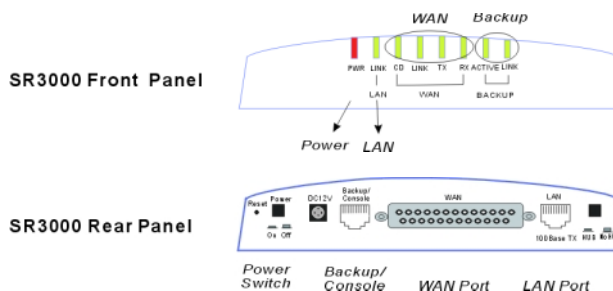
| | |
|----------------------|-------------------------------|
| Operating Humidity | 5 – 95%RH |
| Storage Temp. | -20 – 85°C |
| Dimensions | 189 x 144 x 36 mm (W x D x H) |
| Package weight | 1.5 kg |
| Regulatory approvals | FCC, CE |

Ordering Information

| | |
|-------------------|---|
| SR3000/110V | Internet Router with 110V power adapter |
| SR3000/220V | Internet Router with 220V power adapter |
| All items include | <ul style="list-style-type: none"> One CN20070 cable and one DB25 to V.35 connection cable Network Communications CD-ROM User's Manual |

Optional Accessories

| | |
|---------|---|
| CN20030 | 150 cm RJ45 to female DB25 RS-232 (DCE) cable |
| CN20040 | 150 cm RJ45 to male DB25 RS-232 (DTE) cable |
| CN20060 | 150 cm RJ45 to male DB9 RS-232 (DTE) cable |
| CN20070 | 150 cm RJ45 to female DB9 RS-232 (DCE) cable |



LAN-to-LAN Connection



Moxa Technologies Co., Ltd. (Headquarters)
 Fl.4, No.135, Lane 235, Pao-Chiao Rd., Shing Tien City, Taipei, Taiwan, R.O.C.
 Tel:+886-2-8919-1230 Fax:+886-2-8919-1231
 info@moxa.com.tw

USA
Moxa Networking, Inc.
 Tel:+1-732-738-4303 Fax:+1-732-738-4884
 info@moxa.com

Germany
Moxa Technologies GmbH
 Tel:+49 2405-462766 Fax:+49 2405-462799
 info@moxatech.de

China
Moxa Tech Beijing, Inc.
 Tel:+86-10-6872-3960/61 Fax:+86-10-6872-3958
 moxa@moxa.com.cn