

NPower Commander

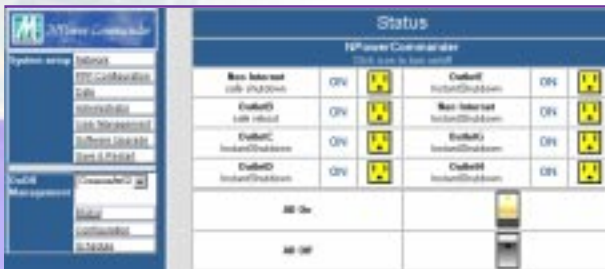
Remotely OnOff any unattended devices

NPower Commander is an intelligent device that gives you remote OnOff control of your unattended equipment. Whether your equipment crashes unexpectedly or you would simply like to set up a regular OnOff schedule, you can control the power supply over a TCP/IP Ethernet, making it a cinch to power on and power off your equipment as needed.

NPower Commander can be controlled over a TCP/IP Ethernet, through an RS-232 PPP connection, or from a regular telephone connection when the network is down. The safe-shutdown ports are particularly useful when working with Windows NT/2000 workstations. Also provides several useful API functions that allow you to power on and power off your equipment for easy programming of your automation system.

Downtime caused by unexpected OS crashes or power outages has the potential to cost your company a lot of money. With NPower Commander, you can reduce downtime by being able to power up your computers and other electrical equipment from a remote location. You can also shut down equipment when it's not being used, helping reduce your power bills. And by cascading up to 16 NPower Commanders together, you can easily and conveniently control as many as 128 pieces of equipment through the same TCP/IP Ethernet connection.

Friendly web-browser user interface



Application

The NPower Commander basic model, with eight individually controlled power outlets, gives you remote OnOff control of your electrical equipment. This is particularly useful if you are responsible for maintaining several pieces of equipment located at various places on a large factory floor. As many as 16 NPower Commanders may be cascaded together through an RS-485 connection, allowing centralized OnOff control of up to 128 pieces of your factory equipment through the same communication channel.

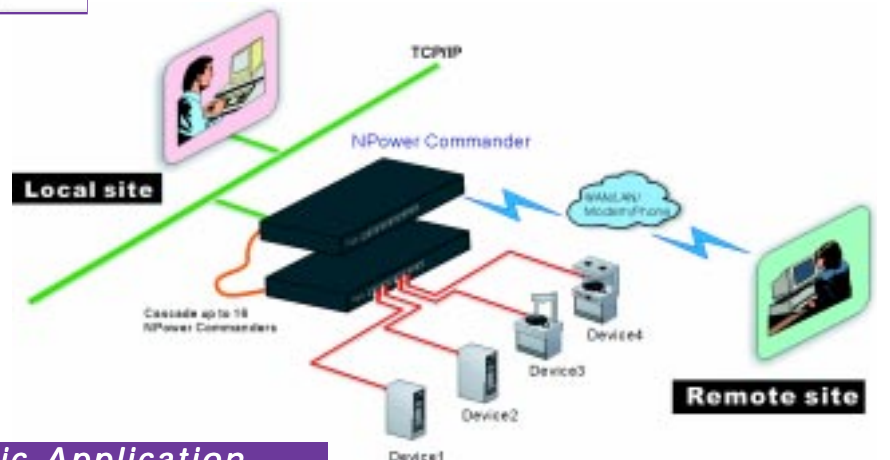


Features

- Remote OnOff control of electrical equipment through a TCP/IP Ethernet or RS-232 PPP connection—over the Internet
- Remote OnOff control of electrical equipment via a telephone port when the network is down
- Easy programming for automatic OnOff control with provided APIs
- Easy setup for various interfaces: RS-232, USB, and Ethernet
- Friendly user interface with web browser for setup and control
- Supports SNMP MIB—works with all major NMSs (Network Management Systems)
- Cascade up to 16 NPower Commanders to control as many as 128 outlets from the same connection
- NPower Commander NT model can be used with Win NT's built-in UPS service for safe-shutdown protection
- Supports daily scheduling of the OnOff function at specified times
- Remote firmware upgrade via TFTP server

Benefits

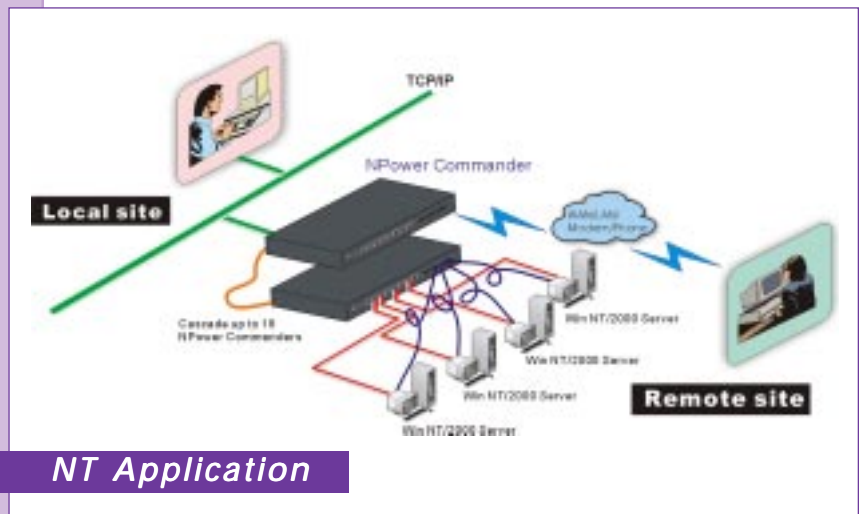
- NPower Commander APIs speed up your development time and make it easy to build up automation applications
- Reduce system downtime to prevent financial loss and damage to your company's reputation
- Gives maintenance personnel more control over their own schedule
- Reduce maintenance personnel's regular OnOff tasks
- Device power management—save power and reduce your power bills



Basic Application

Application

The NPower Commander NT model, with eight individually controlled power outlets and eight safe-shutdown ports, allows you to remotely safe-shutdown a Server without simultaneously shutting off the power, preventing the operating system from crashing. In the Windows NT/2000's operating system, when you decide to reboot your Windows Server, the NPower Commander will activate the built-in UPS service through the safe-shutdown port, closing all applications in your OS, and then wait a preset period of time before shutting off the power to the Server. When needed, you can reverse the process, first activating the power to the Server, and then booting up the Server's operating system, giving you centralized control of the boot up and shutdown process for literally hundreds of computers. This type of application is ideally suited for controlling the equipment used by large Data Warehouses and Internet Data Centers, in which several computers are used to store and retrieve data. You may also make use of provided APIs, which greatly simplify setting up your power OnOff management system.



NT Application

Specifications



Front Panel



Rear Panel

Interface

LAN Interfaces	One 10 Mbps, RJ45 (master only)
iLink Interfaces	Cascade up to 16 NPower Commanders, RJ11
USB Interfaces	One USB1.0 for Setup (master only)
RS-232 Interfaces	One RS-232 port for console & PPP connection (master only)
Phone Interfaces	One input, one output, RJ11(master only)
Safe-shutdown	8 ports, RJ11(NT model only)

LED Indicators

OnOff status	8 Red LEDs per NPower Commander
Control mode	8 Green LEDs for internet/no internet control of each outlet
Cascade IDs	16 Yellow LEDs to indicate the ID of cascaded NPower Commanders

Software

APIs	Supports Windows 95/98/ NT/ 2000, SCO UNIX, UNIX Svr4.2, Linux
Human Interfaces	Http web browser, telnet

Safety Certification

FCC: class B, CE: class B, UL

Power & Environment

Output Receptacle	NEMA-15R (110V) or IEC320R (230V)
Max. output capacity	15A (110V) or 7A (230V)
Input voltage range	90 – 260V AC
Input frequency	50 – 60 HZ full range
Operating temp.	0 – 40°C
Storage temp.	-15 – 50°C
Relative humidity	0 – 95%, Non-condensing
Rack-mounted	19" standard rack
Dimensions	432 x 165 x 44 mm (W x D x H)

Ordering Information

PO1008/110V	NPower Commander basic model, master 110V (power switch, web card, phone card)
PO1008/230V	NPower Commander basic model, master 230V (power switch, web card, phone card)
PO1108/110V	NPower Commander basic model, slave 110V (power switch)
PO1108/230V	NPower Commander basic model, slave 230V (power switch)
PO1208/110V	NPower Commander NT model, master 110V (power switch, web card, phone card, NT card)
PO1208/230V	NPower Commander NT model, master 230V (power switch, web card, phone card, NT card)
PO1308/110V	NPower Commander NT model, slave 110V (power switch, NT card)
PO1308/230V	NPower Commander NT model, slave 230V (power switch, NT card)