



MOXA PComm Pro

**Professional Serial Comm Development Tool for
Windows XP, Windows 2000, Windows NT,
Windows 95/98/ME**

Overview

Software developers must often be confused by Microsoft's Win32 COMM API, used to develop serial comm applications under Windows XP, Windows 2000, Windows NT, and Windows 95/98/ME. The confusion stems from the fact that Win32 COMM API is a general purpose utility, with very complex syntax.

MOXA PComm Pro offers you a better solution. No matter which brand of multiport serial board you have used, standard COMs, Digi, Equinox, Moxa, or others, MOXA PComm Pro is the right tool for you.

MOXA PComm Pro is aimed to help you:

- Speed up serial comm application development
- Troubleshoot serial comm problems between two devices
- Analyze serial comm performance

MOXA PComm Pro includes easy-to-use API functions that are specially designed for async communications, eliminating the problems inherent in Microsoft's more complex Win32 API, and reducing development time and cost.

In addition, MOXA PComm Pro provides useful utilities, such as Data Scope and Performance Analyzer, that help you quickly troubleshoot any serial comm problem.

Easy to Develop

MOXA PComm Pro provides more than 50 easy-to-use API functions with VB, C/C++, and Delphi interface, that are specially designed for serial comm applications. Compare this with Microsoft's Win32 COMM API, in which the same functions are general purpose, and thus very complicated for serial comm developers.

MOXA PComm Pro also supports built-in functions for file transfer protocols, such as ZModem, YModem, XModem, Kermit, and ASCII, making it easier than ever before to program file uploading-and-downloading utilities.

Easy to Troubleshoot

The Data Scope utility, which uses two standard COM ports, behaves the same as a PC-based data scope, letting you set a trigger condition, capture comm data, and monitor signal status with time stamp on an RS-232 line. The under-monitor line speed can be as high as 921.6 Kbps, depending on the speed of the COM ports. You can also save data and status to your hard disk for later analysis, and with the supplied debugging cable, comm activities can be monitored on-line without interference.

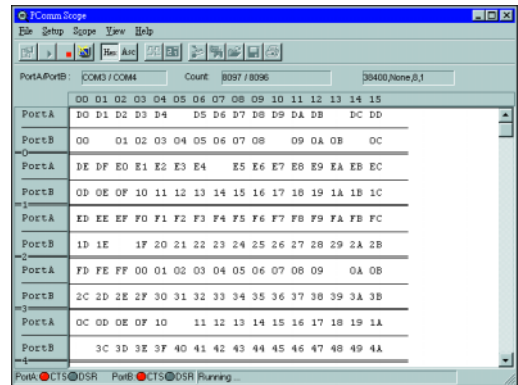
Wide Compatibility

MOXA PComm Pro supports not only standard COM ports, but all multiport boards that support Win32 COMM API, including Digi, Equinox, and Moxa.

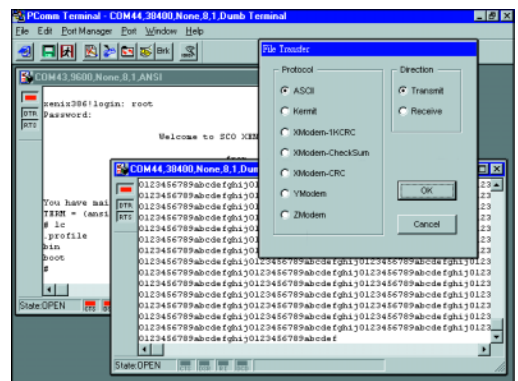
Features

- Easy-to-use API (more than 50 functions)
- Supports ZModem, YModem, XModem, Kermit, and ASCII file transfer protocols
- Supports VB, C/C++, Delphi interface, and example programs
- Supports serial comm speeds up to 921.6 Kbps
- Supports Multi-Session Terminal Emulator (VT100, ANSI)
- Supports Data Scope utility to monitor comm line activity (debugging cable included)
- Supports serial comm Performance Analyzer
- Compatible with any standard COM ports that support Win32 COMM API
- Free lifetime upgrades
- Royalty Free

Data Scope



Terminal Emulator



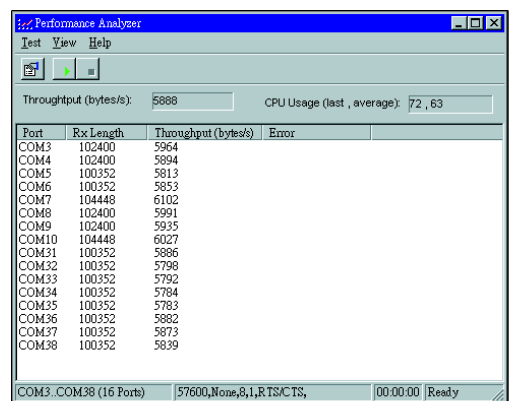
System Requirements

- Intel-compatible PC processor
- Windows XP, Windows 2000, Windows NT (3.51/4.0), or Windows 95/98/ME
- 2.5 MB of hard disk space

System Requirements

SL - 901	<ul style="list-style-type: none"> • MOXA PComm Pro for Windows XP, Windows 2000, Windows NT, Windows 95/98/ME • 1 user license • Debugging cable • CD and manual
SL - 902 (web download only)	<ul style="list-style-type: none"> • MOXA PComm Pro for Windows XP, Windows 2000, Windows NT, Windows 95/98/ME • 1 user license
SL - 905	<ul style="list-style-type: none"> • 5 additional MOXA PComm Pro user licenses (must have already purchased at least 1 SL-901)

Performance Analyzer



MOXA Technologies Co., Ltd. (Headquarters)
 Fl.4, No.135, Lane 235, Pao-Chiao Rd., Shing Tien City, Taipei, Taiwan, R.O.C.
 Tel: +886-2-8919-1230 Fax: +886-2-8919-1231
 info@moxa.com.tw

USA
Moxa Networking, Inc.
 Tel: +1-732-738-4303 Fax: +1-732-738-4884
 info@moxa.com

Germany
Moxa Technologies GmbH
 Tel: +49 2405-462766 Fax: +49 2405-462799
 info@moxatech.de

China
Moxa Tech Beijing, Inc.
 Tel: +86-10-6872-3960/61 Fax: +86-10-6872-3958
 moxa@moxa.com.cn